

DICOM Conformance Statement
for DR-200/DRU-200
(Rev01.04)



NO TEXT

Overview:

This conformance statement details the compliance to DICOM 3.0 of Digital Radiography DR-200/DRU-200.

Table below provides an overview of the network services supported by the DR-200/DRU-200.

NETWORK SERVICES

SOP Classes	User of Services (SCU)	Provider of Services (SCP)
Transfer		
Computed Radiography Image Storage	Yes	No
Digital X-Ray Image Storage - For Presentation	Yes	No
Workflow Management		
Modality Worklist Information Model – FIND	Yes	No
Modality Performed Procedure Step	Yes	No
Print Management		
Basic Grayscale Print Management Meta	Yes	No
Basic Film Session	Yes	No
Basic Film Box	Yes	No
Basic Grayscale Image Box	Yes	No
Printer	Yes	No
Print Job	Yes	No
Verification		
Verification	Yes	No

TABLE OF CONTENTS:

1. INTRODUCTION	5
1.1. REVISION HISTORY	5
1.2. AUDIENCE	5
1.3. REMARKS	5
1.4. TERMS AND DEFINITIONS	6
1.5. BASICS OF DICOM COMMUNICATION	8
1.6. ABBREVIATIONS.....	9
1.7. REFERENCES.....	9
2. NETWORKING	10
2.1. IMPLEMENTATION MODEL	10
2.1.1. Application Data Flow	10
2.1.2. Functional Definitions of AE's	12
2.1.3. Sequencing of Real-World Activities.....	13
2.2. AE SPECIFICATIONS	15
2.2.1. Verification Application Entity Specification	15
2.2.2. Storage Application Entity Specification	18
2.2.3. Workflow Application Entity Specification	24
2.2.4. Hardcopy Application Entity Specification.....	39
2.3. NETWORK INTERFACES	50
2.3.1. Physical Network Interface.....	50
2.3.2. IPv4 and IPv6 Support	50
2.4. CONFIGURATION.....	51
2.4.1. AE Title/Presentation Address Mapping	51
2.4.2. Parameters	52
3. SUPPORT OF CHARACTER SETS	53
4. SECURITY	54
5. ANNEXES	55
5.1. IOD CONTENTS	55
5.1.1. Created SOP Instances	55
5.1.2. Used Fields in received IOD by application	66
5.1.3. Attribute mapping.....	67
5.1.4. Coerced/Modified Fields.....	68
5.2. DATA DICTIONARY OF PRIVATE ATTRIBUTES	68
5.3. CODED TERMINOLOGY AND TEMPLATES.....	69
5.4. GRAYSCALE IMAGE CONSISTENCY	69
5.5. STANDARD EXTENDED/SPECIALIZED/PRIVATE SOP CLASSES	69
5.6. PRIVATE TRANSFER SYNTAXES	69
5.7. HANDLING OF STUDY INSTANCE UID OF WORKLIST ITEM.....	70

1. INTRODUCTION

1.1. REVISION HISTORY

Revision	Date	Description
First Edition	2014/03	New Release
A	2014/07	Correction of errors in Table 5.1-5 The description of value and source field of Study ID (0020,0010).

1.2. AUDIENCE

This document is written for the people that need to understand how the DR-200/DRU-200 will integrate into their healthcare facility. This includes both those responsible for overall imaging network policy and architecture, as well as integrators who need to have a detailed understanding of the DICOM features of the product.

This document contains some basic DICOM definitions so that any reader may understand how this product implements DICOM features. However, integrators are expected to fully understand all the DICOM terminology, how the tables in this document relate to the product's functionality, and how that functionality integrates with other devices that support compatible DICOM features.

1.3. REMARKS

The scope of this DICOM Conformance Statement is to facilitate integration between the DR-200/DRU-200 and other DICOM products. The Conformance Statement should be read and understood in conjunction with the DICOM Standard. DICOM by itself does not guarantee interoperability. The Conformance Statement does, however, facilitate a first-level comparison for interoperability between different applications supporting compatible DICOM functionality.

This Conformance Statement is not supposed to replace validation with other DICOM equipment to ensure proper exchange of intended information. In fact, the user should be aware of the following important issues:

- The comparison of different Conformance Statements is just the first step towards assessing interconnectivity and interoperability between the product and other DICOM conformant equipment.
- Test procedures should be defined and executed to validate the required level of interoperability with specific compatible DICOM equipment, as established by the healthcare facility.

1.4. TERMS AND DEFINITIONS

Informal definitions are provided for the following terms used in this Conformance Statement. The DICOM Standard is the authoritative source for formal definitions of these terms.

Abstract Syntax – the information agreed to be exchanged between applications, generally equivalent to a Service/Object Pair (SOP) Class.

Examples : Verification SOP Class, Modality Worklist Information Model Find SOP Class, Computed Radiography Image Storage SOP Class.

Application Entity (AE) – an end point of a DICOM information exchange, including the DICOM network or media interface software; i.e., the software that sends or receives DICOM information objects or messages. A single device may have multiple Application Entities.

Application Entity Title – the externally known name of an Application Entity, used to identify a DICOM application to other DICOM applications on the network.

Application Context – the specification of the type of communication used between Application Entities. Example: DICOM network protocol.

Association – a network communication channel set up between Application Entities.

Attribute – a unit of information in an object definition; a data element identified by a tag. The information may be a complex data structure (Sequence), itself composed of lower level data elements.

Examples: Patient ID (0010,0020), Accession Number (0008,0050), Photometric Interpretation (0028,0004), Procedure Code Sequence (0008,1032).

Information Object Definition (IOD) – the specified set of Attributes that comprise a type of data object; does not represent a specific instance of the data object, but rather a class of similar data objects that have the same properties. The Attributes may be specified as Mandatory (Type 1), Required but possibly unknown (Type 2), or Optional (Type 3), and there may be conditions associated with the use of an Attribute (Types 1C and 2C).

Examples: MR Image IOD, CT Image IOD, Print Job IOD.

Module – a set of Attributes within an Information Object Definition that are logically related to each other.

Example: Patient Module includes Patient Name, Patient ID, Patient Birth Date, and Patient Sex.

Negotiation – first phase of Association establishment that allows Application Entities to agree on the types of data to be exchanged and how that data will be encoded.

Presentation Context – the set of DICOM network services used over an Association, as negotiated between Application Entities; includes Abstract Syntaxes and Transfer Syntaxes.

Protocol Data Unit (PDU) – a packet (piece) of a DICOM message sent across the network. Devices must specify the maximum size packet they can receive for DICOM messages.

Service Class Provider (SCP) – role of an Application Entity that provides a DICOM network service; typically, a server that performs operations requested by another Application Entity (Service Class User). Examples: Picture Archiving and Communication System (image storage SCP, and image query/retrieve SCP), Radiology Information System (modality worklist SCP).

Service Class User (SCU) – role of an Application Entity that uses a DICOM network service; typically, a client.

Examples: imaging modality (image storage SCU, and modality worklist SCU), imaging workstation (image query/retrieve SCU)

Service/Object Pair (SOP) Class – the specification of the network or media transfer (service) of a particular type of data (object); the fundamental unit of DICOM interoperability specification. Examples: Ultrasound Image Storage Service, Basic Grayscale Print Management.

Service/Object Pair (SOP) Instance – an information object; a specific occurrence of information exchanged in a SOP Class.

Examples: a specific x-ray image.

Tag – a 32-bit identifier for a data element, represented as a pair of four digit hexadecimal numbers, the “group” and the “element”. If the “group” number is odd, the tag is for a private (manufacturer-specific) data element.

Examples: (0010,0020) [Patient ID], (07FE,0010) [Pixel Data], (0019,0210) [private data element]

Transfer Syntax – the encoding used for exchange of DICOM information objects and messages.

Examples: JPEG compressed (images), little endian explicit value representation.

Unique Identifier (UID) – a globally unique “dotted decimal” string that identifies a specific object or a class of objects; an ISO-8824 Object Identifier.

Examples: Study Instance UID, SOP Class UID, SOP Instance UID.

Value Representation (VR) – the format type of an individual DICOM data element, such as text, an integer, a person’s name, or a code. DICOM information objects can be transmitted with either explicit identification of the type of each data element (Explicit VR), or without explicit identification (Implicit VR); with Implicit VR, the receiving application must use a DICOM data dictionary to look up the format of each data element.

1.5. BASICS OF DICOM COMMUNICATION

This section describes terminology used in this Conformance Statement for the non-specialist. The key terms used in the Conformance Statement are highlighted in *italics* below. This section is not a substitute for training about DICOM, and it makes many simplifications about the meanings of DICOM terms.

Two *Application Entities* (devices) that want to communicate with each other over a network using DICOM protocol must first agree on several things during an initial network “handshake”. One of the two devices must initiate an *Association* (a connection to the other device), and ask if specific services, information, and encoding can be supported by the other device (*Negotiation*).

DICOM specifies a number of network services and types of information objects, each of which is called an *Abstract Syntax* for the Negotiation. DICOM also specifies a variety of methods for encoding data, denoted *Transfer Syntaxes*. The Negotiation allows the initiating Application Entity to propose combinations of Abstract Syntax and Transfer Syntax to be used on the Association; these combinations are called *Presentation Contexts*. The receiving Application Entity accepts the Presentation Contexts it supports.

For each Presentation Context, the Association Negotiation also allows the devices to agree on *Roles* – which one is the *Service Class User* (SCU - client) and which is the *Service Class Provider* (SCP - server). Normally the device initiating the connection is the SCU, i.e., the client system calls the server, but not always.

The Association Negotiation finally enables exchange of maximum network packet (*PDU*) size, security information, and network service options (called *Extended Negotiation* information).

The Application Entities, having negotiated the Association parameters, may now commence exchanging data. Common data exchanges include queries for worklists and lists of stored images, transfer of image objects and analyses (structured reports), and sending images to film printers. Each exchangeable unit of data is formatted by the sender in accordance with the appropriate *Information Object Definition*, and sent using the negotiated Transfer Syntax. There is a Default Transfer Syntax that all systems must accept, but it may not be the most efficient for some use cases. Each transfer is explicitly acknowledged by the receiver with a *Response Status* indicating success, failure, or that query or retrieve operations are still in process.

Two Application Entities may also communicate with each other by exchanging media (such as a DVD-R). Since there is no Association Negotiation possible, they both use a *Media Application Profile* that specifies “pre-negotiated” exchange media format, Abstract Syntax, and Transfer Syntax.

1.6. ABBREVIATIONS

AE	Application Entity
AET	Application Entity Title
CR	Computed Radiography
CT	Computed Tomography
DHCP	Dynamic Host Configuration Protocol
DICOM	Digital Imaging and Communications in Medicine
DNS	Domain Name System
DX	Digital X-ray
GSDF	Grayscale Standard Display Function
GSPP	Grayscale Softcopy Presentation State
HIS	Hospital Information System
IHE	Integrating the Healthcare Enterprise
IOD	Information Object Definition
IPv4	Internet Protocol version 4
ISO	International Organization for Standardization
LDAP	Lightweight Directory Access Protocol
LUT	Look-up Table
MPPS	Modality Performed Procedure Step
MSPS	Modality Scheduled Procedure Step
MWL	Modality Worklist
NTP	Network Time Protocol
PACS	Picture Archiving and Communication System
PDU	Protocol Data Unit
RF	Radiofluoroscopy
RIS	Radiology Information System
SCP	Service Class Provider
SCU	Service Class User
SOP	Service-Object Pair
SPS	Scheduled Procedure Step
TCP/IP	Transmission Control Protocol/Internet Protocol
UL	Upper Layer
VM	Value Multiplicity
VR	Value Representation

1.7. REFERENCES

- NEMA PS3 Digital Imaging and Communications in Medicine (DICOM) Standard, available free at <http://medical.nema.org/>

2. NETWORKING

2.1. IMPLEMENTATION MODEL

2.1.1. Application Data Flow

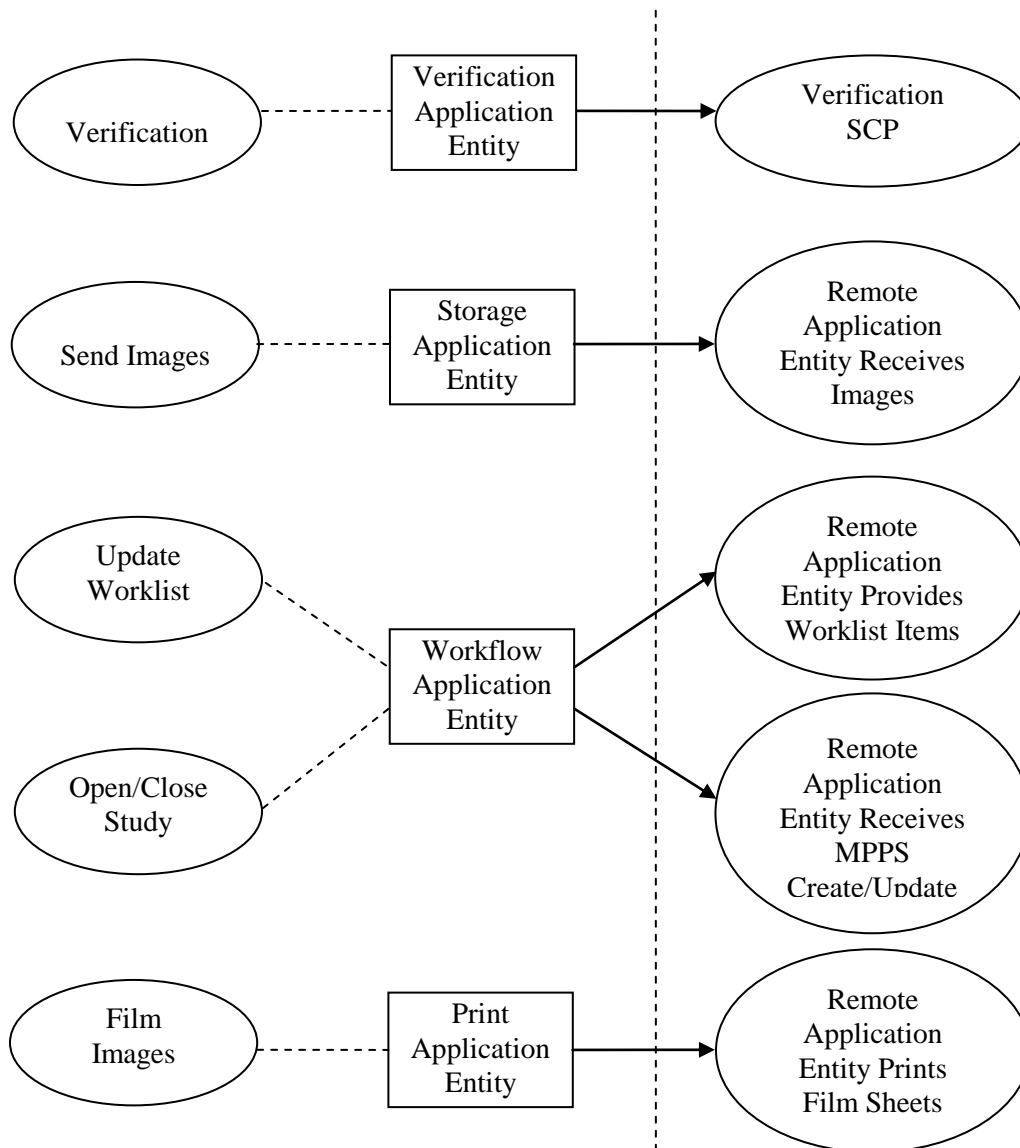


Figure 2.1-1
APPLICATION DATA FLOW DIAGRAM

The Verification Application Entity issues a C-ECHO to verify a DICOM connection to a remote AE. It is associated with the local real-world activity “Verify Connectivity”. “Verify Connectivity” is performed via the ServiceTool.

The Storage Application Entity sends images to a remote AE. It is associated with the local real-world activity “Send Images”. “Send Images” is performed upon user request for each radiography/study or for specific images selected. When activated by user’s settings (auto-send), each marked set of images can be immediately stored to a preferred destination whenever next radiography is performed or a Patient/Study is closed by the user.

The Workflow Application Entity receives Worklist information from and sends MPPS information to a remote AE. It is associated with the local real-world activities “Update Worklist” and “Open/Close Study”. When the “Update Worklist” local real-world activity is performed the Workflow Application Entity queries a remote AE for worklist items and provides the set of worklist items matching the query request. “Update Worklist” is performed as a result of an operator request or can be performed automatically at specific operation. When the “Open/Close Study” local real-world activity is performed the Worklist Application Entity creates and updates Modality Performed Procedure Step instances managed by a remote AE. Opening Study will result in automated creation of an MPPS Instance. Completion of the MPPS is performed as the result of an operator action.

The Hardcopy Application Entity prints images on a remote AE (Printer). It is associated with the real-world activity “Film Images”. “Film Images” creates a print-job within the print queue containing one or more virtual film sheets composed from images selected by the user.

2.1.2. Functional Definitions of AE's

2.1.2.1. Functional Definition of Verification Application Entity

The Verification-SCU AE issues a C-ECHO to verify a DICOM connection to a remote AE. It is performed via theService Tool.

2.1.2.2. Functional Definition of Storage Application Entity

The existence of a send-job queue entry with associated network destination will activate the Storage AE. An association request is sent to the destination AE and upon successful negotiation of a Presentation Context the image transfer is started. If the association cannot be opened, the related send-job is set to an error state and can be restarted by the user via job control interface. By default, the Storage AE will not try to initiate another association for this send-job automatically.

2.1.2.3. Functional Definition of Workflow Application Entity

Worklist Update attempts to download a Worklist from a remote node. If the Workflow AE establishes an Association to a remote AE, it will transfer all worklist items via the open Association. During receiving the worklist response items are counted and the query processing is canceled if the configurable limit of items is reached. The result will be displayed in a separate list, which can be cleared with the next Worklist Update based on the configuration.

The Workflow AE performs the creation of a MPPS Instance automatically whenever studies are started. Further updates on the MPPS data can be performed interactively from the related MPPS user interface. The MPPS "Complete" or "Discontinued" states can only be set from the user interface.

2.1.2.4. Functional Definition of Hardcopy Application Entity

The existence of a print-job in the print queue will activate the Hardcopy AE. An association is established with the printer and the printer's status determined. If the printer is operating normally, the film sheets described within the print-job will be printed. Changes in printer status will be detected (e.g. out of film) and reported to the user. If the printer is not operating normally, the print-job will set to an error state and can be restarted by the user via the job control interface.

2.1.3. Sequencing of Real-World Activities

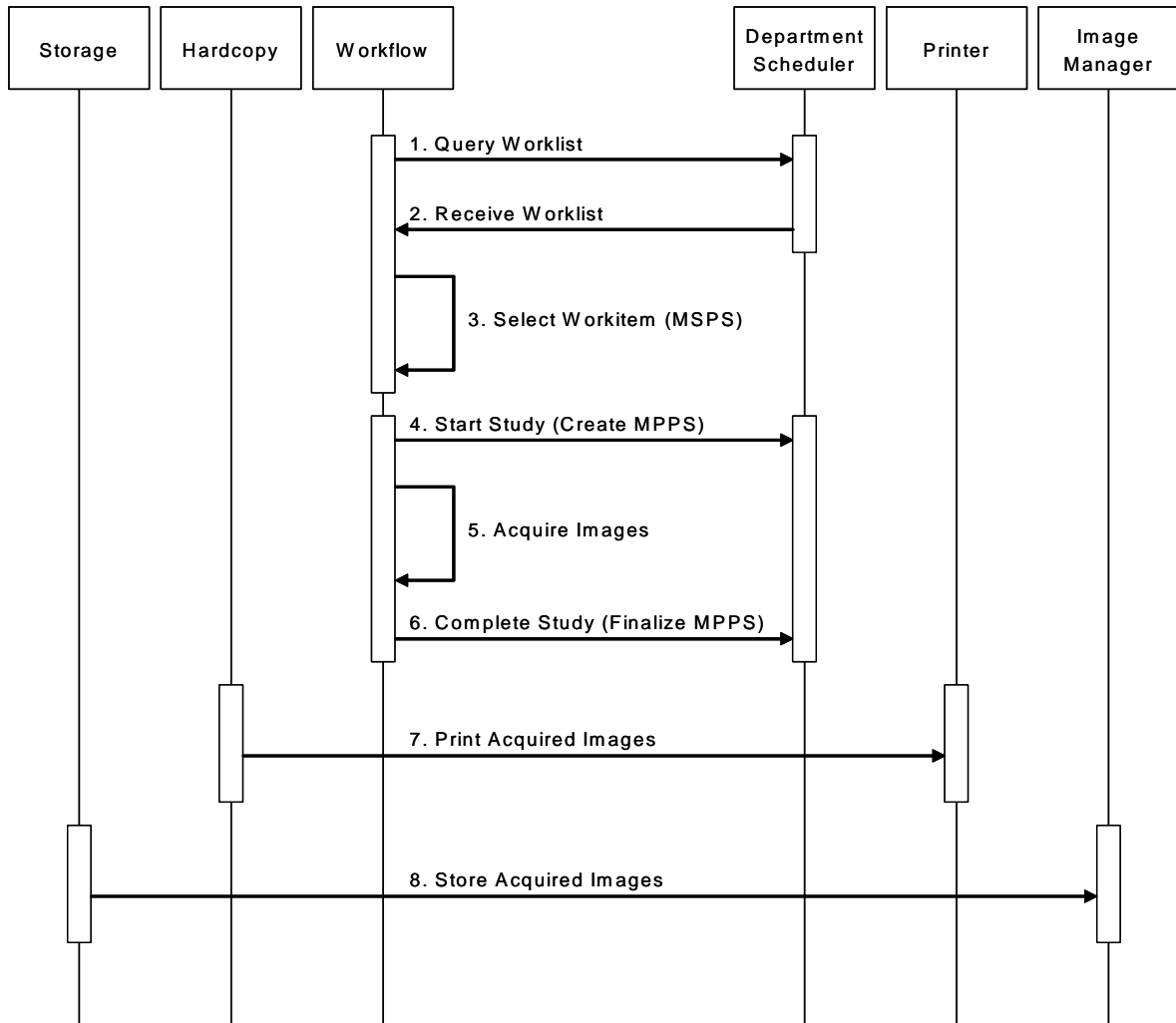


Figure 2.1-2 SEQUENCING CONSTRAINTS

Under normal scheduled workflow conditions the sequencing constraints illustrated in Figure 2-1-2 apply;

1. Query Worklist
2. Receive Worklist of Modality Scheduled Procedure Steps (MSPS)
3. Select Workitem (MSPS) from Worklist
4. Start Study and create MPPS
5. Acquire Images
6. Complete Study and finalize MPPS
7. Print acquired images
8. Store acquired images

Other workflow situations (e.g. unscheduled procedure steps) will have other sequencing constraints. Printing could equally take place after the acquired images have been stored. Printing could be omitted completely if no printer is connected or hardcopies are not required.

2.2. AE SPECIFICATIONS

2.2.1. Verification Application Entity Specification

2.2.1.1. SOPClasses

The DR-200/DRU-200 provides Standard Conformance to the following SOP Classes.

Table 2.2-1
SOP CLASSES FOR AE VERIFICATION

SOP Class Name	SOP Class UID	SCU	SCP
Verification	1.2.840.10008.1.1	Yes	No

2.2.1.2. Association Policies

2.2.1.2.1. General

The DICOM standard application context name for DICOM 3.0 is always proposed.

Table 2.2-2
DICOM APPLICATION CONTEXT FOR AE VERIFICATION

Application Context Name	1.2.840.10008.3.1.1.1
--------------------------	-----------------------

2.2.1.2.2. Number of Associations

The DR-200/DRU-200 initiates one Association at a time.

Table 2.2-3
NUMBER OF ASSOCIATIONS INITIATED FOR AE VERIFICATION

Maximum number of simultaneous Associations	1
---	---

2.2.1.2.3. Asynchronous Nature

The DR-200/DRU-200 does not support asynchronous communication (multiple outstanding transactions over a single Association).

Table 2.2-4
ASYNCHRONOUS NATURE AS A SCU FOR AE VERIFICATION

Maximum number of outstanding asynchronous transactions	1
---	---

2.2.1.2.4. Implementation Identifying Information

The implementation information for this Application Entity is:

Table 2.2-5
DICOM IMPLEMENTATION CLASS AND VERSION FOR AE VERIFICATION

Implementation Class UID	1.2.840.113654.2.3.1995.3.0.6
Implementation Version Name	MIRCTN11MAR2003

2.2.1.3. Association Initiation Policy

2.2.1.3.1. Activity – Verify Connectivity

2.2.1.3.1.1. Description and Sequencing of Activities

The request for a verification is initiated by user interaction and the result is displayed on user interface.

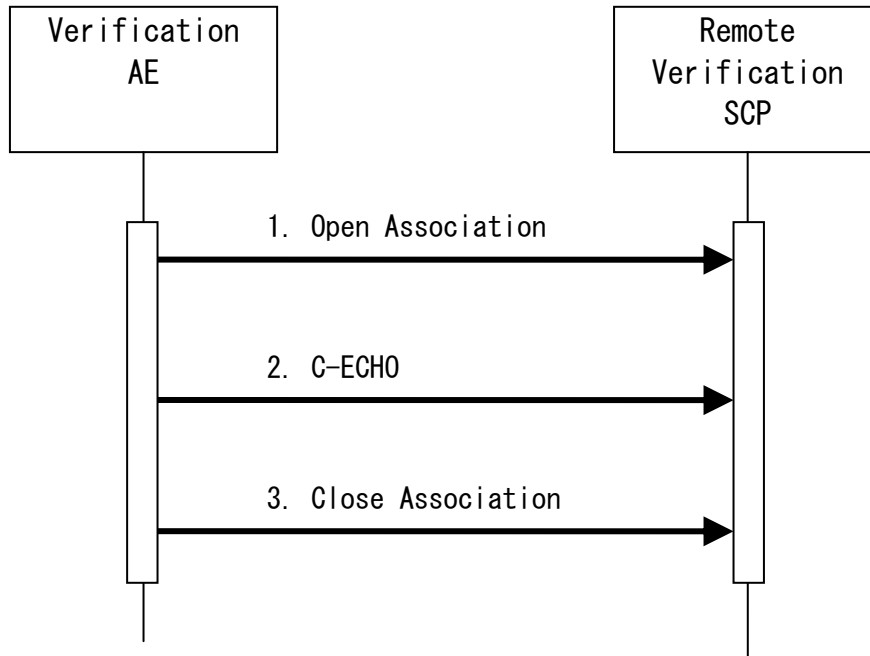


Figure 2.2-1 SEQUENCE OF ACTIVITY – VERIFY CONNECTION

A possible sequence of interactions between the Verification AE and an Verification SCP is illustrated in Figure above:

1. The Verification AE opens an association with the Remote Verification SCP.
2. Verification is transmitted to the Remote Verification SCP using a C-ECHO request and the Remote Verification SCP replies with a C-ECHO response (status success).
3. The Verification SCU closes the association with the Remote Verification SCP.

2.2.1.3.1.2. Proposed Presentation Contexts

The DR-200/DRU-200 is capable of proposing the Presentation Contexts shown in the following table:

**Table 2.2-6
PROPOSED PRESENTATION CONTEXTS FOR ACTIVITY VERIFY CONNECTION**

Presentation Context Table					
Abstract Syntax		Transfer Syntax		Role	Ext. Neg.
Name	UID	Name	UID		
Verification	1.2.840.10008.1.1	Implicit VR Little Endian	1.2.840.10008.1.2	SCU	None

2.2.1.3.1.3. SOP Specific Conformance Image Storage SOP Classes

The DR-200/DRU-200 provides standard conformance to the DICOM Verification Service Class as an SCU. The status code for the C-ECHO is as follows:

**Table 2.2-7
C-ECHO Response Status Handling Behavior**

Code	Status	Meaning
0000	SUCCESS	The C-ECHO request is accepted.
Any other Status code	*	The Association is released using A-RELEASE and the failure is reported to the user.

2.2.2. Storage Application Entity Specification

2.2.2.1. SOP Classes

The DR-200/DRU-200 provides Standard Conformance to the following SOP Classes:

Table 2.2-8
SOP CLASSES FOR AE STORAGE

SOP Class Name	SOP Class UID	SCU	SCP
Digital X-Ray Image Storage - For Presentation	1.2.840.10008.5.1.4.1.1.1.1	Yes	No
Computed Radiography Image Storage	1.2.840.10008.5.1.4.1.1.1	Yes	No

2.2.2.2. Association Policies

2.2.2.2.1. General

The DICOM standard application context name for DICOM 3.0 is always proposed:

Table 2.2-9
DICOM APPLICATION CONTEXT FOR AE STORAGE

Application Context Name	1.2.840.10008.3.1.1.1
--------------------------	-----------------------

2.2.2.2.2. Number of Associations

The DR-200/DRU-200 initiates one Association at a time for each destination to which a transfer request is being processed in the active job queue list. Only one job will be active at a time, the other remains pending until the active job is completed or failed.

Table 2.2-10
NUMBER OF ASSOCIATIONS INITIATED FOR AE STORAGE

Maximum number of simultaneous Associations	1
---	---

2.2.2.2.3. Asynchronous Nature

The DR-200/DRU-200 does not support asynchronous communication (multiple outstanding transactions over a single Association).

Table 2.2-11
ASYNCHRONOUS NATURE AS A SCU FOR AE STORAGE

Maximum number of outstanding asynchronous transactions	1
---	---

2.2.2.2.4. Implementation Identifying Information

The implementation information for this Application Entity is:

Table 2.2-12

DICOM IMPLEMENTATION CLASS AND VERSION FOR AE STORAGE

Implementation Class UID	1.2.392.200036.9110.1.0.6711.2001002
Implementation Version Name	SPF XX (XX : version number)

2.2.2.3. Association Initiation Policy

2.2.2.3.1. Activity – Send Images

2.2.2.3.1.1. Description and Sequencing of Activities

A user can select images and request them to be sent to multiple destinations. Each request is forwarded to the job queue and processed individually. When the “Auto-send” option is active, each marked instance or marked set of instances stored in database will be forwarded to the network job queue for a pre-configured auto-send target destination. It can be configured which instances will be automatically marked and the destination where the instances are automatically sent to. The “Auto-send” is triggered by the next acquisition.

The Storage AE is invoked by the job control interface that is responsible for processing network archival tasks. The job consists of data describing the instances marked for storage and the destination. An internal daemon process triggered by a job for a specific network destination initiates a C-STORE request to store images. If the process successfully establishes an Association to a remote Application Entity, it will transfer each marked instance one after another via the open Association. Status of the transfer is reported through the job control interface. Only one job will be active at a time. If the C-STORE Response from the remote Application contains a status other than Success or Warning, the Association is aborted and the related Job is switched to a failed state. It can be restarted any time by user interaction.

The Storage AE attempts to initiate a new Association in order to issue a C-STORE request. If the job contains multiple images then multiple C-STORE requests will be issued over the same Association.

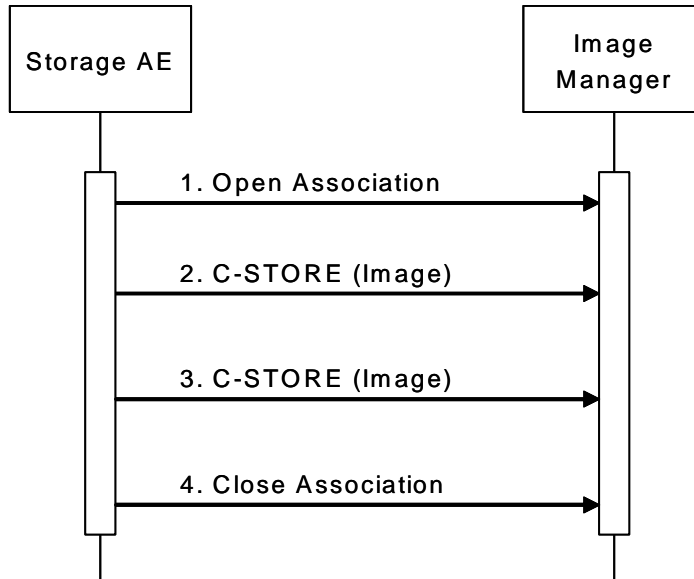


Figure 2.2-2 SEQUENCE OF ACTIVITY – SEND IMAGES

A possible sequence of interactions between the Storage AE and an Image Manager (e.g. a storage or archive device supporting the Storage SOP Class as an SCP) is illustrated in Figure above:

1. The Storage AE opens an association with the Image Manager
2. An acquired image is transmitted to the Image Manager using a C-STORE request and the Image Manager replies with a C-STORE response (status success).
3. Another acquired image is transmitted to the Image Manager using a C-STORE request and the Image Manager replies with a C-STORE response (status success).
4. The Storage AE closes the association with the Image Manager.

NOTE: Many other message sequences are possible depending on the number of images to be stored.

2.2.2.3.1.2. Proposed Presentation Contexts

The DR-200/DRU-200 is capable of proposing the Presentation Contexts shown in the following table:

Table 2.2-13

PROPOSED PRESENTATION CONTEXTS FOR ACTIVITY SEND IMAGES

Presentation Context Table					
Abstract Syntax		Transfer Syntax		Role	Ext. Neg.
Name	UID	Name	UID		
Digital X-Ray Image Storage - For Presentation	1.2.840.10008.5.1.4.1.1.1.1	Implicit VR Little Endian	1.2.840.10008.1.2	SCU	None
		Explicit VR Little Endian	1.2.840.10008.1.2.1		
		Explicit VR Big Endian	1.2.840.10008.1.2.2		
Computed Radiography Image Storage	1.2.840.10008.5.1.4.1.1.1	Implicit VR Little Endian	1.2.840.10008.1.2	SCU	None
		Explicit VR Little Endian	1.2.840.10008.1.2.1		
		Explicit VR Big Endian	1.2.840.10008.1.2.2		

Presentation Contexts for each Image Storage will only be proposed if the Send Job contains instances for these SOP Classes.

2.2.2.3.1.3. SOP Specific Conformance Image Storage SOP Classes

All Image Storage SOP Classes supported by the Storage AE exhibit the same behaviour, except where stated, and are described together in this section.

Table 2.2-14

STORAGE C-STORE RESPONSE STATUS HANDLING BEHAVIOR

Service Status	Further Meaning	Error Code	Behavior
Success	Success	0000	The SCP has successfully stored the SOP Instance. If all SOP Instances in a send job have status success then the job is marked as complete.
Refused	Out of Resources	A700- A7FF	The Association is released using A-RELEASE and the send job is marked as failed. The status meaning is logged and the job failure is reported to the user via the job control application. This is a transient failure.
Error	Data Set does not match SOP Class	A900- A9FF	The Association is released using A-RELEASE and the send job is marked as failed. The status meaning is logged and the job failure is reported to the user via the job control application.
Error	Cannot Understand	C000- CFFF	The Association is released using A-RELEASE and the send job is marked as failed. The status meaning is logged and the job failure is reported to the user via the job control application.
Warning	Coercion of Data Elements	B000	Image transmission is considered successful but the status meaning is logged.
Warning	Elements Discarded	B006	Image transmission is considered successful but the status meaning is logged.
Warning	Data Set does not match SOP Class	B007	Image transmission is considered successful. The status meaning is logged and the job warning is reported to the user via the job control application.
*	*	Any other status code.	The Association is released using A-RELEASE and the send job is marked as failed. The status code is logged and the job failure is reported to the user via the job control application.

The behaviour of Storage AE during communication failure is summarized in the Table below:

Table 2.2-15
STORAGE COMMUNICATION FAILURE BEHAVIOR

Exception	Behavior
Timeout	The Association is released using A-RELEASE and the send job is marked as failed. The reason is logged and the job failure is reported to the user via the job control application.
Association aborted by the SCP or network layers	The send job is marked as failed The reason is logged and the job failure is reported to the user via the job control application.

A failed send job can be restarted by user interaction.

The contents of each Image Storage SOP Instances created by the DR-200/DRU-200 conform to the DICOM Image IOD definition and are described in Annex A of this document.

2.2.3. Workflow Application Entity Specification

2.2.3.1. SOP Classes

The DR-200/DRU-200 provides Standard Conformance to the following SOP Classes:

Table 2.2-16

SOP CLASSES SUPPORTED FOR AE WORKFLOW

SOP Class Name	SOP Class UID	SCU	SCP
Modality Worklist Information Model - FIND	1.2.840.10008.5.1.4.31	Yes	No
Modality Performed Procedure Step	1.2.840.10008.3.1.2.3.3	Yes	No

2.2.3.2. Association Policies

2.2.3.2.1. General

The DICOM standard application context name for DICOM 3.0 is always proposed:

Table 2.2-17

DICOM APPLICATION CONTEXT FOR AE WORKFLOW

Application Context Name	1.2.840.10008.3.1.1.1
--------------------------	-----------------------

2.2.3.2.2. Number of Associations

The DR-200/DRU-200 initiates one Association at a time for Worklist request.

Table 2.2-18

NUMBER OF ASSOCIATIONS INITIATED FOR AE WORKFLOW

Maximum number of simultaneous Associations	1
---	---

2.2.3.2.3. Asynchronous Nature

The DR-200/DRU-200 does not support asynchronous communication (multiple outstanding transactions over a single Association).

Table 2.2-19

ASYNCHRONOUS NATURE AS A SCU FOR AE WORKFLOW

Maximum number of outstanding asynchronous transactions	1
---	---

2.2.3.2.4. Implementation Identifying Information

The implementation information for this Application Entity is:

Table 2.2-20

DICOM IMPLEMENTATION CLASS AND VERSION FOR AE WORKFLOW

Implementation Class UID	1.2.392.200036.9110.1.0.6711.2001002
Implementation Version Name	SPF XX (XX : version number)

2.2.3.3. Association Initiation Policy

2.2.3.3.1. Activity – Worklist Update

2.2.3.3.1.1. Description and Sequencing of Activities

The request for a Worklist Update is initiated by user interaction, i.e. pressing the buttons “Update” / ”Query” or automatically triggered by specific operation. With “Update” the automated query mechanism is performed immediately on request, while with “Query” a dialog to enter search criteria is opened an interactive query can be performed.

The interactive Patient Worklist Query will display a dialog for entering data as search criteria. When the Query is started on user request, only the data from the dialog will be inserted as matching keys into the query.

Upon initiation of the request, the DR-200/DRU-200 will build an Identifier for the C-FIND request, will initiate an Association to send the request and will wait for Worklist responses. After retrieval of all responses, the DR-200/DRU-200 will access the local database to add or update patient demographic data. To protect the system from overflow, the DR-200/DRU-200 will limit the number of processed worklist responses to a configurable maximum. During receiving the worklist response items are counted and the query processing is canceled by issuing a C-FIND-CANCEL if the configurable limit of items is reached.

The DR-200/DRU-200 will initiate an Association in order to issue a C-FIND request according to the Modality Worklist Information Model.

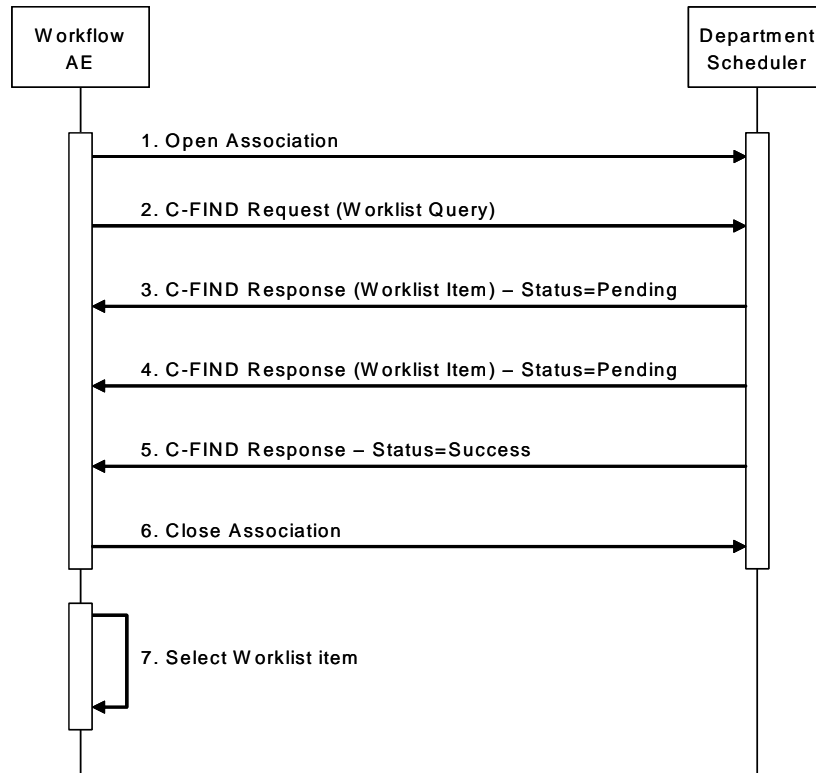


Figure 2.2-3 SEQUENCE OF ACTIVITY – WORKLIST UPDATE

A possible sequence of interactions between the Workflow AE and a Department Scheduler (e.g. a device such as a RIS or HIS which supports the Modality Worklist SOP Class as an SCP) is illustrated in Figure above:

1. The Worklist AE opens an association with the Department Scheduler.
2. The Worklist AE sends a C-FIND request to the Department Scheduler containing the Worklist Query attributes.
3. The Department Scheduler returns a C-FIND response containing the requested attributes of the first matching Worklist Item.
4. The Department Scheduler returns another C-FIND response containing the requested attributes of the second matching Worklist Item.
5. The Department Scheduler returns another C-FIND response with status Success indicating that no further matching Worklist Items exist. This example assumes that only 2 Worklist items match the Worklist Query.
6. The Worklist AE closes the association with the Department Scheduler.
7. The user selects a Worklist Item from the Worklist and prepares to acquire new images.

2.2.3.3.1.2. Proposed Presentation Contexts

The DR-200/DRU-200 will propose Presentation Contexts as shown in the following table:

Table 2.2-21

PROPOSED PRESENTATION CONTEXTS FOR WORKLIST UPDATE

Presentation Context Table					
Abstract Syntax		Transfer Syntax		Role	Ext. Neg.
Name	UID	Name	UID		
Modality Worklist Information Model – FIND	1.2.840.10008.5.1.4.31	Implicit VR Little Endian	1.2.840.10008.1.2	SCU	None
		Explicit VR Little Endian	1.2.840.10008.1.2.1		
		Explicit VR Big Endian	1.2.840.10008.1.2.2		

2.2.3.3.1.3. SOP Specific Conformance for Modality Worklist

The behavior of the DR-200/DRU-200 when encountering status codes in a Modality Worklist C-FIND response is summarized in the Table below. If any other SCP response status than “Success” or “Pending” is received by the DR-200/DRU-200, an error message will appear on the user interface.

Table 2.2-22

MODALITY WORKLIST C-FIND RESPONSE STATUS HANDLING BEHAVIOR

Service Status	Further Meaning	Error Code	Behavior
Success	Matching is complete	0000	The SCP has completed the matches. Worklist items are available for display or further processing.
Refused	Out of Resources	A700	The Association is released using A-RELEASE and the worklist query is marked as failed. The status meaning is logged and reported to the user if an interactive query. Any additional error information in the Response will be logged.
Failed	Identifier does not match SOP Class	A900	The Association is released using A-RELEASE and the worklist query is marked as failed. The status meaning is logged and reported to the user if an interactive query. Any additional error information in the Response will be logged.
Failed	Unable to Process	C000-CFFF	The Association is released using A-RELEASE and the worklist query is marked as failed. The status meaning is logged and reported to the user if an interactive query. Any additional error information in the Response will be logged.

Service Status	Further Meaning	Error Code	Behavior
Cancel	Matching terminated due to Cancel request	FE00	If the query was cancelled due to too many worklist items then the SCP has completed the matches. Worklist items are available for display or further processing. Otherwise, the Association is released using A-RELEASE and the worklist query is marked as failed. The status meaning is logged and reported to the user if an interactive query.
Pending	Matches are continuing	FF00	The worklist item contained in the Identifier is collected for later display or further processing.
Pending	Matches are continuing – Warning that one or more Optional Keys were not supported	FF01	The worklist item contained in the Identifier is collected for later display or further processing. The status meaning is logged only once for each C-FIND operation.
*	*	Any other status code.	The Association is released using A-RELEASE and the worklist is marked as failed. The status meaning is logged and reported to the user if an interactive query. Any additional error information in the Response will be logged.

The behaviour of the DR-200/DRU-200 during communication failure is summarized in the Table below.

Table 2.2-23

MODALITY WORKLIST COMMUNICATION FAILURE BEHAVIOR

Exception	Behavior
Timeout	The Association is released using A-RELEASE and the worklist query is marked as failed. The reason is logged and reported to the user if an interactive query.
Association aborted by the SCP or network layers	The worklist query is marked as failed The reason is logged and reported to the user if an interactive query.

Acquired images will always use the Study Instance UID specified for the Scheduled Procedure Step (if available). If an acquisition is unscheduled, a Study Instance UID will be generated locally.

The Table below provides a description of the DR-200/DRU-200 Worklist Request Identifier and specifies the attributes that are copied into the images. Unexpected attributes returned in a C-FIND response are ignored.

Requested return attributes not supported by the SCP are set to have no value. Non-matching responses returned by the SCP due to unsupported optional matching keys are ignored.

**Table 2.2-24
WORKLIST REQUEST IDENTIFIER**

Module Name Attribute Name	Tag	VR	M	R	Q	D	IOD
SOP Common							
Specific Character Set	(0008,0005)	CS	S				
Scheduled Procedure Step							
Scheduled Procedure Step Sequence	(0040,0100)	SQ		x			
> Modality	(0008,0060)	CS	S		x		
> Requested Contrast Agent	(0032,1070)	LO					
> Scheduled Station AE Title	(0040,0001)	AE	S	x	x		
> Scheduled Procedure Step Start Date	(0040,0002)	DA	R		x	x	
> Scheduled Procedure Step Start Time	(0040,0003)	T M	R		x	x	
> Scheduled Performing Physician's Name	(0040,0006)	PN		x			
> Scheduled Procedure Step Description	(0040,0007)	LO		x			x
> Scheduled Protocol Code Sequence	(0040,0008)	SQ		x			x
> Code Value	(0008,0100)	CS		x			x
> Coding Scheme Designator	(0008,0102)	SH		x			x
> Coding Scheme Version	(0008,0103)	SH		x			x
> Code Meaning	(0008,0104)	LO		x			x
> Scheduled Procedure Step ID	(0040,0009)	SH		x			x
> Scheduled Station Name	(0040,0010)	SH		x			x
Requested Procedure							
Referenced Study Sequence	(0008,1110)	SQ		x			
> Referenced SOP Class UID	(0008,1150)	UI		x			
> Referenced SOP Instance UID	(0008,1155)	UI		x			
Study Instance UID	(0020,000D)	UI		x			x
Requested Procedure Description	(0032,1060)	LO		x			x
Requested Procedure Code Sequence	(0032,1064)	SQ		x			x

Module Name Attribute Name	Tag	VR	M	R	Q	D	IOD
> Code Value	(0008,0100)	CS		x			x
> Coding Scheme Designator	(0008,0102)	SH		x			x
> Coding Scheme Version	(0008,0103)	SH		x			x
> Code Meaning	(0008,0104)	LO		x			x
Requested Procedure ID	(0040,1001)	SH		x	x		x
Imaging Service Request							
Accession Number	(0008,0050)	SH	S	x	x	x	
Referring Physician's Name	(0008,0090)	PN		x			
Requesting Physician	(0032,1032)	PN		x			
Patient Identification							
Patient Name	(0010,0010)	PN	S*	x	x	x	
Patient ID	(0010,0020)	LO	S*	x	x	x	
Patient Demographic							
Patient's Birth Date	(0010,0030)	DA		x		x	
Patient's Sex	(0010,0040)	CS		x		x	
Patient's Age	(0010,1010)	AS		x		x	
Patient's Size	(0010,1020)	DS		x		x	
Patient's Weight	(0010,1030)	DS		x		x	
Patient Medical							
Medical Alerts	(0010,2000)	LO		x		x	
Pregnancy Status	(0010,21C0)	US		x		x	
Special Needs	(0038,0050)	LO		x		x	

The above table should be read as follows:

Module Name: The name of the associated module for supported worklist attributes.

Attribute Name: Attributes supported to build an DR-200/DRU-200 Worklist Request Identifier.

Tag: DICOM tag for this attribute.

VR: DICOM VR for this attribute.

M: Matching keys for Worklist Update. An "S" will indicate that the DR-200/DRU-200 will supply an attribute value for Single Value Matching, an "R" will indicate Range Matching and an "*" will denote wildcard matching.

- R: Return keys. An “x” will indicate that the DR-200/DRU-200 will supply this attribute as Return Key with zero length for Universal Matching.
- Q: Interactive Query Key. An “x” will indicate that the DR-200/DRU-200 will supply this attribute as matching key, if entered in the Query Patient Worklist dialog. For example, the Patient Name can be entered thereby restricting Worklist responses to Procedure Steps scheduled for the patient.
- D: Displayed keys. An “x” indicates that this worklist attribute is displayed to the user during a patient registration dialog. For example, Patient Name will be displayed when registering the patient prior to an examination.
- IOD: An “x” indicates that this Worklist attribute is included into all Object Instances created during performance of the related Procedure Step.

2.2.3.3.2. Activity – Acquire Images

2.2.3.3.2.1. Description and Sequencing of Activities

After Patient registration, the DR-200/DRU-200 is awaiting starting study of the patient. The trigger to create a MPPS SOP Instance is derived from this event. An Association to the configured MPPS SCP system is established immediately and the related MPPS SOP Instance will be created.

The DR-200/DRU-200 will set its status as “DISCONTINUED” when closing the study without any X-Ray exposure during the study. Otherwise, the status will be set as “COMPLETED”. A MPPS Instance that has been sent with a state of “COMPLETED” or “DISCONTINUED” can no longer be updated.

The DR-200/DRU-200 will support creation of “unscheduled cases” by allowing MPPS Instances to be communicated for locally registered Patients.

The DR-200/DRU-200 will initiate an Association to issue an:

- N-CREATE request according to the CREATE Modality Performed Procedure Step SOP Instance operation.
- N-SET request to update the contents and state of the MPPS according to the SET Modality Performed Procedure Step Information operation.

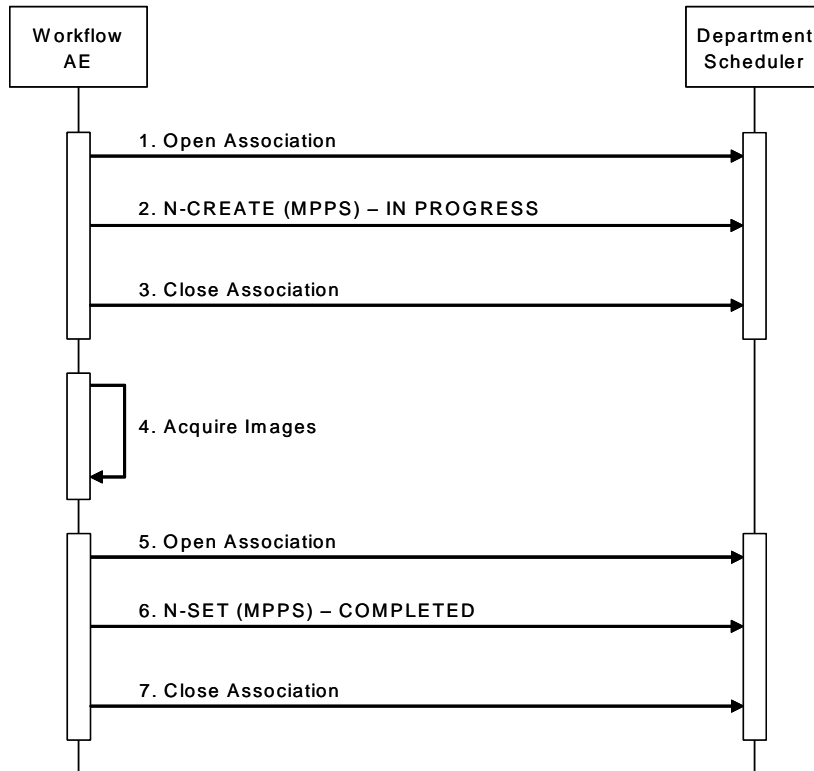


Figure 2.2-4 SEQUENCE OF ACTIVITY – ACQUIRE IMAGES

A possible sequence of interactions between the Workflow AE and a Department Scheduler (e.g. a device such as a RIS or HIS which supports the MPPS SOP Class as an SCP) is illustrated in Figure above:

1. The Worklist AE opens an association with the Department Scheduler.
2. The Worklist AE sends an N-CREATE request to the Department Scheduler to create an MPPS instance with status of “IN PROGRESS” and create all necessary attributes. The Department Scheduler acknowledges the MPPS creation with an N-CREATE response (status success).
3. The Worklist AE closes the association with the Department Scheduler.
4. All images are acquired and stored in the local database.
5. The Worklist AE opens an association with the Department Scheduler.
6. The Worklist AE sends an N-SET request to the Department Scheduler to update the MPPS instance with status of “COMPLETED” and set all necessary attributes. The Department Scheduler acknowledges the MPPS update an N-SET response (status success).
7. The Worklist AE closes the association with the Department Scheduler.

2.2.3.3.2.2. Proposed Presentation Contexts

The DR-200/DRU-200 will propose Presentation Contexts as shown in the following table:

Table 2.2-25

PROPOSED PRESENTATION CONTEXTS FOR REAL-WORLD ACTIVITY ACQUIRE IMAGES

Presentation Context Table					
Abstract Syntax		Transfer Syntax		Role	Ext. Neg.
Name	UID	Name	UID		
Modality Performed Procedure Step	1.2.840.10008.3.1 .2.3.3	Implicit VR Little Endian	1.2.840.10008.1.2	SCU	None
		Explicit VR Little Endian	1.2.840.10008.1.2.1		
		Explicit VR Big Endian	1.2.840.10008.1.2.2		

2.2.3.3.2.3. SOP Specific Conformance for MPPS

The behavior of the DR-200/DRU-200 when encountering status codes in an MPPS N-CREATE or N-SET response is summarized in the Table below. If any other SCP response status than “Success” or “Warning” is received by the DR-200/DRU-200, an error message will appear on the user interface.

Table 2.2-26

MPPS N-CREATE / N-SET RESPONSE STATUS HANDLING BEHAVIOR

Service Status	Further Meaning	Error Code	Behavior
Success	Success	0000	The SCP has completed the operation successfully.
Failed	Processing Failure – Performed Procedure Step Object may no longer be updated	0110	The Association is released using A-RELEASE and the MPPS is marked as failed. The status meaning is logged and reported to the user. Additional information in the Response will be logged.
Warning	Attribute Value Out of Range	0116	The MPPS operation is considered successful but the status meaning is logged. Additional information in the Response identifying the attributes out of range will be logged.
*	*	Any other status code.	The Association is released using A-RELEASE and the MPPS is marked as failed. The status meaning is logged and reported to the user.

The behaviour of the DR-200/DRU-200 during communication failure is summarized in the Table below.

Table 2.2-27
MODALITY WORKLIST COMMUNICATION FAILURE BEHAVIOR

Exception	Behavior
Timeout	The Association is released using A-RELEASE and the MPPS is marked as failed. The reason is logged and reported to the user.
Association aborted by the SCP or network layers	The MPPS is marked as failed The reason is logged and reported to the user.

The following Table provides a description of the MPPS N-CREATE and N-SET request identifiers sent by the DR-200/DRU-200. Empty cells in the N-CREATE and N-SET columns indicate that the attribute is not sent. An “x” indicates that an appropriate value will be sent. A “Zero length” attribute will be sent with zero length.

Table 2.2-28
MPPS N-CREATE / N-SET REQUEST IDENTIFIER

Attribute Name	Tag	VR	N-CREATE	N-SET
Specific Character Set	(0008,0005)	CS	From configuration In Japanese Mode: “ISO_IR 13” or “ISO 2022 IR 13\ISO 2022 IR 87” or “ISO 2022 IR 13\ISO 2022 IR 87\ISO 2022 IR 159” or “\ISO 2022 IR 87” or “\ISO 2022 IR 87\ISO 2022 IR 159” In English Mode: “ISO_IR 100”	
Modality	(0008,0060)	CS	From configuration “DX or CR”	
Procedure Code Sequence	(0008,1032)	SQ	From Modality Worklist or Zero length	
> Code Value	(0008,0100)	SH	From Modality Worklist	
> Coding Scheme Designator	(0008,0102)	SH	From Modality Worklist	
> Coding Scheme Version	(0008,0103)	SH	From Modality Worklist	
> Code Meaning	(0008,0104)	LO	From Modality Worklist	

Attribute Name	Tag	VR	N-CREATE	N-SET
Referenced Patient Sequence	(0008,1120)	SQ	Zero length	
Patient's Name	(0010,0010)	PN	From Modality Worklist or user input (3 component groups with 5 components)	
Patient ID	(0010,0020)	LO	From Modality Worklist or user input	
Patient's Birth Date	(0010,0030)	DA	From Modality Worklist or user input	
Patient's Sex	(0010,0040)	CS	From Modality Worklist or user input	
Image and Fluoroscopy Area Dose Product	(0018,115E)	DS	Zero length	Total DAP
Study ID	(0020,0010)	SH	User input	
Performed Station AE Title	(0040,0241)	AE	MPPS AE Title	
Performed Station Name	(0040,0242)	SH	From configuration	
Performed Location	(0040,0243)	SH	From configuration	
Performed Procedure Step Start Date	(0040,0244)	DA	Actual start date	
Performed Procedure Step Start Time	(0040,0245)	TM	Actual start time	
Performed Procedure Step End Date	(0040,0250)	DA	Zero length	Actual end date
Performed Procedure Step End Time	(0040,0251)	TM	Zero length	Actual end time
Performed Procedure Step Status	(0040,0252)	CS	"IN PROGRESS"	"DISCONTINUED" or, "COMPLETED"

Attribute Name	Tag	VR	N-CREATE	N-SET
Performed Procedure Step ID	(0040,0253)	SH	From Modality Worklist or Internally generated Serial Number	
Performed Procedure Step Description	(0040,0254)	LO	From Modality Worklist	
Performed Procedure Type Description	(0040,0255)	LO	Zero length	
Performed Protocol Code Sequence	(0040,0260)	SQ	Zero length	Zero or more items
> Code Value	(0008,0100)	SH		From Modality Worklist or "No Order" or Internal Protocol Code
> Coding Scheme Designator	(0008,0102)	SH		From Modality Worklist or "Shimadzu DR-200"
> Coding Scheme Version	(0008,0103)	SH		From Modality Worklist or "1.0"
> Code Meaning	(0008,0104)	LO		From Modality Worklist or "Unplanned Acquisition" or Internal Protocol Name
Scheduled Step Attributes Sequence	(0040,0270)	SQ	one item	
> Accession Number	(0008,0050)	SH	From Modality Worklist or user input	
> Referenced Study Sequence	(0008,1110)	SQ	Zero length	
> Study Instance UID	(0020,000D)	UI	From Modality Worklist or generated by device	
> Requested Procedure Description	(0032,1060)	LO	From Modality Worklist	

Attribute Name	Tag	VR	N-CREATE	N-SET
> Scheduled Procedure Step Description	(0040,0007)	LO	From Modality Worklist	
> Scheduled Protocol Code Sequence	(0040,0008)	SQ	From Modality Worklist	
>> Code Value	(0008,0100)	SH	From Modality Worklist	
>> Coding Scheme Designator	(0008,0102)	SH	From Modality Worklist	
>> Coding Scheme Version	(0008,0103)	SH	From Modality Worklist	
>> Code Meaning	(0008,0104)	LO	From Modality Worklist	
> Scheduled Procedure Step ID	(0040,0009)	SH	From Modality Worklist	
> Requested Procedure ID	(0040,1001)	SH	From Modality Worklist	
Total Number of Exposures	(0040,0301)	US	Zero length	Number of exposures.
Exposure Dose Sequence	(0040,030E)	SQ	Zero length	Zero or more items.
> KVP	(0018,0060)	DS		Actual KV
> Exposure Time	(0018,1150)	IS		Actual Exposure Time
> Radiation Mode	(0018,115A)	CS		"PULSED"
> X-Ray Tube Current in micro A	(0018,8151)	DS		Actual X-Ray Tube Current in micro A
> Filter Type	(0018,1160)	CS		Filter is being inserted : "STRIP" Filter is not inserted : "NONE"
> Filter Material	(0018,7050)	CS		Actual Filter Material being inserted
> Protocol Name	(0018,1030)	LO		User input (*)
> Series Instance UID	(0020,000E)	UI		Automatically created
Film Consumption Sequence	(0040,0321)	SQ	Zero length	Zero or more items
> Film Size ID	(2010,0050)	CS		Actual Film Size being printed during the study

Attribute Name	Tag	VR	N-CREATE	N-SET
> Number of Films	(2100,0170)	IS		Actual Number of Films being printed during the study
Performed Series Sequence	(0040,0340)	SQ	Zero length	Zero or more items
> Retrieve AE Title	(0008,0054)	AE		Zero length
> Series Description	(0008,103E)	LO		Procedure Name and its Description selected when the study is closed
> Performing Physician's Name	(0008,1050)	PN		Performing Physician's Name
> Operator's Name	(0008,1070)	PN		Operator's Name
> Referenced Image Sequence	(0008,1140)	SQ		Zero or more items
>> Referenced SOP Class UID	(0008,1150)	UI		"1.2.840.10008.5.1.4.1.1.1" or "1.2.840.10008.5.1.4.1.1.1.1"
>> Referenced SOP Instance UID	(0008,1155)	UI		x
> Protocol Name	(0018,1030)	LO		Protocol Name selected when the study is closed
> Series Instance UID	(0020,000E)	UI		x
> Referenced Non-Image Composite SOP Instance Sequence	(0040,0220)	SQ	Zero length	Zero length
Entrance Dose in mGy	(0040,8302)	DS		Total Entrance Dose (Air Kerma) in mGy

2.2.3.4. Association Acceptance Policy

The Workflow Application Entity does not accept Associations.

2.2.4. Hardcopy Application Entity Specification

2.2.4.1. SOP Classes

The DR-200/DRU-200 provides Standard Conformance to the following SOP Classes:

Table 2.2-29
SOP CLASSES FOR AE HARDCOPY

SOP Class Name	SOP Class UID	SCU	SCP
Basic Grayscale Print Management Meta	1.2.840.10008.5.1.1.9	Yes	No
Basic Film Session	1.2.840.10008.5.1.1.1	Yes	No
Basic Film Box	1.2.840.10008.5.1.1.2	Yes	No
Basic Grayscale Image Box	1.2.840.10008.5.1.1.4	Yes	No
Printer	1.2.840.10008.5.1.1.16	Yes	No
Print Job	1.2.840.10008.5.1.1.14	Yes	No

2.2.4.2. Association Policies

2.2.4.2.1. General

The DICOM standard application context name for DICOM 3.0 is always proposed:

Table 2.2-30
DICOM APPLICATION CONTEXT FOR AE HARDCOPY

Application Context Name	1.2.840.10008.3.1.1.1
--------------------------	-----------------------

2.2.4.2.2. Number of Associations

The DR-200/DRU-200 initiates one Association at a time for each configured hardcopy device. Multiple hardcopy devices can be configured.

Table 2.2-31
NUMBER OF ASSOCIATIONS INITIATED FOR AE HARDCOPY

Maximum number of simultaneous Associations	1
---	---

2.2.4.2.3. Asynchronous Nature

The DR-200/DRU-200 does not support asynchronous communication (multiple outstanding transactions over a single Association).

Table 2.2-32

ASYNCHRONOUS NATURE AS A SCU FOR AE HARDCOPY

Maximum number of outstanding asynchronous transactions	1
---	---

2.2.4.2.4. Implementation Identifying Information

The implementation information for this Application Entity is:

Table 2.2-33

DICOM IMPLEMENTATION CLASS AND VERSION FOR AE HARDCOPY

Implementation Class UID	1.2.392.200036.9110.1.0.6711.2001002
Implementation Version Name	SPF XX (XX : version number)

2.2.4.3. Association Initiation Policy

2.2.4.3.1. Activity – Film Images

2.2.4.3.1.1. Description and Sequencing of Activities

A user can compose images onto film sheets and requests them to be sent to a specific hardcopy device. The user can select the desired film format and number of copies. Each print-job is forwarded to the job queue and processed individually.

The Hardcopy AE is invoked by the job control interface that is responsible for processing network tasks. The job consists of data describing the images and graphics to be printed as well as the requested layout and other parameters. Each images on the sheet is sent to the specified device and will be set in the same sheet there. If no association to the printer can be established, the print-job is switched to a failed state and the user informed.

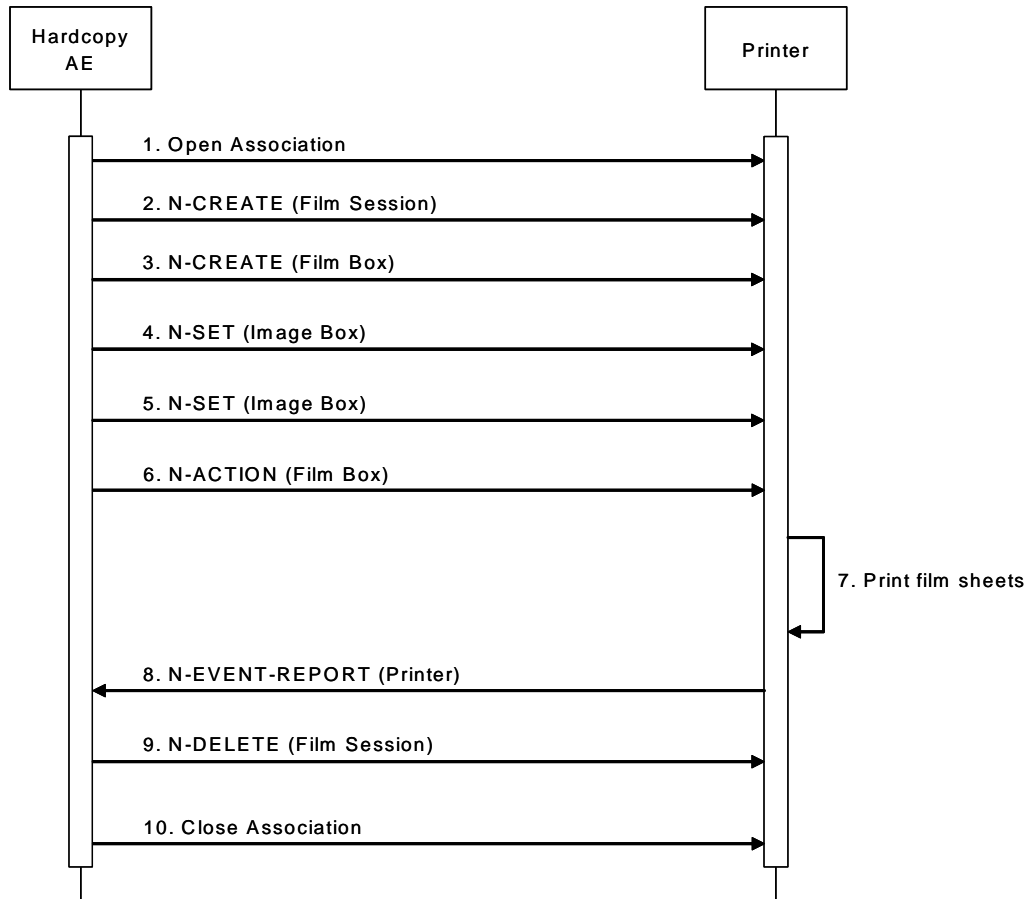


Figure 2.2-5 SEQUENCE OF ACTIVITY – FILM IMAGES

A typical sequence of DIMSE messages sent over an association between Hardcopy AE and a Printer is illustrated in Figure above:

1. Hardcopy AE opens an association with the Printer
2. N-CREATE on the Film Session SOP Class creates a Film Session.
3. N-CREATE on the Film Box SOP Class creates a Film Box linked to the Film Session.
4. N-SET on the Image Box SOP Class transfers image of the film sheet to the printer.
5. N-SET on the Image Box SOP Class transfers another image of the film sheet to the printer.
6. N-ACTION on the Film Box SOP Class instructs the printer to print the Film Box.
7. The printer prints the requested number of film sheets.
8. The Printer asynchronously reports its status via N-EVENT-REPORT notification (Printer SOP Class). The printer can send this message at any time. Hardcopy AE does not require the N-EVENT-REPORT to be sent. Hardcopy AE is capable of receiving an N-EVENT-REPORT

notification at any time during an association. If the Printer reports a status of FAILURE, the print-job is switched to a failed status and the user informed.

9. N-DELETE on the Film Session SOP Class deletes the complete Film Session SOP Instance hierarchy.
10. Hardcopy AE closes the association with the Printer.

Status of the print-job is reported through the job control interface. Only one job will be active at a time for each separate hardcopy device. If any Response from the remote Application contains a status other than Success or Warning, the Association is aborted and the related job is switched to a failed state. It can be restarted any time by user interaction.

2.2.4.3.1.2. Proposed Presentation Contexts

The DR-200/DRU-200 is capable of proposing the Presentation Contexts shown in the following table:

Table 2.2-34

PROPOSED PRESENTATION CONTEXTS FOR ACTIVITY FILM IMAGES

Presentation Context Table					
Abstract Syntax		Transfer Syntax		Role	Ext. Neg.
Name	UID	Name	UID		
Basic Grayscale Print Management (META)	1.2.840.10008.5.1 .1.9	Implicit VR Little Endian	1.2.840.10008.1.2	SCU	None
		Explicit VR Little Endian	1.2.840.10008.1.2.1		
		Explicit VR Big Endian	1.2.840.10008.1.2.2		
Print Job	1.2.840.10008.5.1 .1.14	Implicit VR Little Endian	1.2.840.10008.1.2	SCU	None
		Explicit VR Little Endian	1.2.840.10008.1.2.1		
		Explicit VR Big Endian	1.2.840.10008.1.2.2		

2.2.4.3.1.3. Common SOP Specific Conformance for all Print SOP Classes

The general behavior of Hardcopy AE during communication failure is summarized in the Table below. This behavior is common for all SOP Classes supported by Hardcopy AE.

Table 2.2-35

HARDCOPY COMMUNICATION FAILURE BEHAVIOR

Exception	Behavior
Timeout	The Association is released using A-RELEASE and the print-job is marked as failed. The reason is logged and the job failure is reported to the user via the job control application.
Association aborted by the SCP or network layers	The print-job is marked as failed. The reason is logged and the job failure is reported to the user via the job control application.

2.2.4.3.1.4. SOP Specific Conformance for the Printer SOP Class

Hardcopy AE supports the following DIMSE notifications for the Printer SOP Class:

- N-EVENT-REPORT

Details of the supported attributes and status handling behaviour are described in the following subsections.

2.2.4.3.1.4.1. Printer SOP Class Operation (N-EVENT-REPORT)

Hardcopy AE is capable of receiving an N-EVENT-REPORT request at any time during an association.

The behavior of Hardcopy AE when receiving Event Types within the N-EVENT-REPORT is summarized in the Table below:

Table 2.2-36

PRINTER SOP CLASS N-EVENT-REPORT BEHAVIOUR

Event Type Name	Event Type ID	Behaviour
Normal	1	The print-job continues to be printed.
Warning	2	The print-job continues to be printed. The contents of Printer Status Info (2110,0020) is logged and reported to the user via the job-control application.
Failure	3	The print-job is marked as failed. The contents of Printer Status Info (2110,0020) is logged and reported to the user via the job-control application.
*	*	An invalid Event Type ID will cause a status code of 0113H to be returned in a N-EVENT-REPORT response.

The reasons for returning specific status codes in a N-EVENT-REPORT response are summarized in the Table below:

Table 2.2-37

PRINTER SOP CLASS N-EVENT-REPORT RESPONSE STATUS REASONS

Service Status	Further Meaning	Error Code	Reasons
Success	Success	0000	The notification event has been successfully received.
Failure	No Such Event Type	0113	An invalid Event Type ID was supplied in the N-EVENT-REPORT request.
Failure	Processing Failure	0110	An internal error occurred during processing of the N-EVENT-REPORT. A short description of the error will be returned in Error Comment (0000,0902).

2.2.4.3.1.5. SOP Specific Conformance for the Film Session SOP Class

Hardcopy AE supports the following DIMSE operations for the Film Session SOP Class:

- N-CREATE
- N-DELETE

Details of the supported attributes and status handling behaviour are described in the following subsections.

2.2.4.3.1.5.1. Film Session SOP Class Operation (N-CREATE)

The attributes supplied in an N-CREATE Request are listed in the Table below:

Table 2.2-38

FILM SESSION SOP CLASS N-CREATE REQUEST ATTRIBUTES

Attribute Name	Tag	VR	Value	Presence of Value	Source
Number of Copies	(2000,0010)	IS	1 ..	ALWAYS	USER
Print Priority	(2000,0020)	CS		ALWAYS	AUTO
Medium Type	(2000,0030)	CS		ALWAYS	AUTO
Film Destination	(2000,0040)	CS		ALWAYS	AUTO

The behavior of Hardcopy AE when encountering status codes in a N-CREATE response is summarized in the Table below:

Table 2.2-39

FILM SESSION SOP CLASS N-CREATE RESPONSE STATUS HANDLING BEHAVIOR

Service Status	Further Meaning	Error Code	Reasons
Success	Success	0000	The SCP has completed the operation successfully.
*	*	Any other status code.	The Association is released using A-RELEASE and the print-job is marked as failed. The status meaning is logged and reported to the user.

2.2.4.3.1.5.2. Film Session SOP Class Operation (N-DELETE)

The behavior of Hardcopy AE when encountering status codes in a N-DELETE response is summarized in the Table below:

Table 2.2-40

FILM SESSION SOP CLASS N-DELETE RESPONSE STATUS HANDLING BEHAVIOR

Service Status	Further Meaning	Error Code	Reasons
Success	Success	0000	The SCP has completed the operation successfully.
*	*	Any other status code.	The Association is released using A-RELEASE and the print-job is marked as failed. The status meaning is logged and reported to the user.

2.2.4.3.1.6. SOP Specific Conformance for the Film Box SOP Class

Hardcopy AE supports the following DIMSE operations for the Film Box SOP Class:

- N-CREATE
- N-ACTION

Details of the supported attributes and status handling behaviour are described in the following subsections.

2.2.4.3.1.6.1. Film Box SOP Class Operation (N-CREATE)

The attributes supplied in an N-CREATE Request are listed in the Table below:

**Table 2.2-41
FILM BOX SOP CLASS N-CREATE REQUEST ATTRIBUTES**

Attribute Name	Tag	VR	Value	Presence of Value	Source
Image Display Format	(2010,0010)	ST	From user input	ALWAYS	USER
Film Orientation	(2010,0040)	CS	From user input	ALWAYS	USER
Film Size ID	(2010,0050)	CS	From user input	ALWAYS	USER
Magnification Type	(2010,0060)	CS	From Configuration	ALWAYS	AUTO
Smoothing Type	(2010,0080)	CS	From Configuration	ALWAYS	AUTO
Border Density	(2010,0100)	CS	From Configuration	ALWAYS	AUTO
Empty Image Density	(2010,0110)	CS	From Configuration	ALWAYS	AUTO
Trim	(2010,0140)	CS	From Configuration	ALWAYS	AUTO
Configuration Information	(2010,0150)	CS	From Configuration	ALWAYS	AUTO
Referenced Film Session Sequence	(2010,0500)	SQ		ALWAYS	AUTO
>Referenced SOP Class UID	(0008,1150)	UI		ALWAYS	AUTO
>Referenced SOP Instance UID	(0008,1155)	UI		ALWAYS	AUTO

The behavior of Hardcopy AE when encountering status codes in a N-CREATE response is summarized in the Table below:

Table 2.2-42

FILM BOX SOP CLASS N-CREATE RESPONSE STATUS HANDLING BEHAVIOR

Service Status	Further Meaning	Error Code	Reasons
Success	Success	0000	The SCP has completed the operation successfully.
*	*	Any other status code.	The Association is released using A-RELEASE and the print-job is marked as failed. The status meaning is logged and reported to the user.

2.2.4.3.1.6.2. Film Box SOP Class Operation (N-ACTION)

An N-ACTION Request is issued to instruct the Print SCP to print the contents of the Film Box. The Action Reply argument in an N-ACTION response is not evaluated.

The behavior of Hardcopy AE when encountering status codes in a N-ACTION response is summarized in the Table below:

Table 2.2-43

FILM BOX SOP CLASS N-ACTION RESPONSE STATUS HANDLING BEHAVIOR

Service Status	Further Meaning	Error Code	Reasons
Success	Success	0000	The SCP has completed the operation successfully. The film has been accepted for printing.
*	*	Any other status code.	The Association is released using A-RELEASE and the print-job is marked as failed. The status meaning is logged and reported to the user.

2.2.4.3.1.7. SOP Specific Conformance for the Image Box SOP Class

Hardcopy AE supports the following DIMSE operations for the Image Box SOP Class:

- N-SET

Details of the supported attributes and status handling behaviour are described in the following subsections.

2.2.4.3.1.7.1. Image Box SOP Class Operation (N-SET)

The attributes supplied in an N-SET Request are listed in the Table below:

**Table 2.2-44
IMAGE BOX SOP CLASS N-SET REQUEST ATTRIBUTES**

Attribute Name	Tag	VR	Value	Presence of Value	Source
Image Box Position	(2020,0010)	US	Depends on image position	ALWAYS	AUTO
Basic Grayscale Image Sequence	(2020,0110)	SQ		ALWAYS	AUTO
>Samples Per Pixel	(0028,0002)	US	“1”	ALWAYS	AUTO
>Photometric Interpretation	(0028,0004)	CS	“MONOCHROME2”	ALWAYS	AUTO
>Rows	(0028,0010)	US	Depends on image size	ALWAYS	AUTO
>Columns	(0028,0011)	US	Depends on image size	ALWAYS	AUTO
>Bits Allocated	(0028,0100)	US	From Configuration	ALWAYS	AUTO
>Bits Stored	(0028,0101)	US	From Configuration	ALWAYS	AUTO
>High Bit	(0028,0102)	US	From Configuration	ALWAYS	AUTO
>Pixel Representation	(0028,0103)	US	“0”	ALWAYS	AUTO
>Pixel Data	(7FE0,0010)	OW	Pixels of rendered image	ALWAYS	AUTO

The behavior of Hardcopy AE when encountering status codes in a N-SET response is summarized in the Table below:

Table 2.2-45

IMAGE BOX SOP CLASS N-SET RESPONSE STATUS HANDLING BEHAVIOR

Service Status	Further Meaning	Error Code	Reasons
Success	Success	0000	The SCP has completed the operation successfully. Image successfully stored in Image Box.
*	*	Any other status code.	The Association is released using A-RELEASE and the print-job is marked as failed. The status meaning is logged and reported to the user.

2.3. NETWORK INTERFACES

2.3.1. Physical Network Interface

The DR-200/DRU-200 supports a single network interface. One of the following physical network interfaces will be available depending on installed hardware options:

Table 2.3-1

SUPPORTED PHYSICAL NETWORK INTERFACES

Ethernet 1000baseT
Ethernet 100base-TX
Ethernet 10baseT

2.3.2. IPv4 and IPv6 Support

This product only supports IPv4 connections.

2.4. CONFIGURATION

2.4.1. AE Title/Presentation Address Mapping

2.4.1.1. Local AE Titles

All local applications use the AE Titles and TCP/IP Ports configured via the Service Tool. The default AE Titles is listed below.

Table 2.4-1
AE TITLE CONFIGURABLE TABLE

Application Entity	Default AE Title	Default TCP/IP Port
Storage	DR200_STORE_SCU	
Workflow	MWL	DR200_MWM_SCU
	MPPS	DR200_MPPS_SCU
Hardcopy	DR200_PRINT_SCU	

2.4.1.2. Remote AE Title/Presentation Address Mapping

The AE Title, host names and port numbers of remote applications are configured using the DR-200/DRU-200 Service Tool.

2.4.1.2.1. Storage

The DR-200/DRU-200 Service Tool must be used to set the AE Titles, port-numbers, host-names and capabilities for the remote Storage SCPs. Multiple remote Storage SCPs can be defined.

2.4.1.2.2. Workflow

The DR-200/DRU-200 Service Tool must be used to set the AE Titles, port-numbers, host-names and capabilities of the remote Modality Worklist SCPs. Even though multiple remote Workflow SCPs can be defined, only one SCP can be selected at a time. The DR-200/DRU-200 will open an association to the SCP selected in the user interface.

The DR-200/DRU-200 Service Tool must be used to set the AE Title, port-number, host-name and capabilities of the remote MPPS SCP. Only a single remote MPPS SCP can be defined.

2.4.1.2.3. Hardcopy

The DR-200/DRU-200 Service Tool must be used to set the AE Titles, port-numbers, host-names and capabilities for the remote Print SCPs. Multiple remote Print SCPs can be defined.

2.4.2. Parameters

A large number of parameters related to acquisition and general operation can be configured using the Service Tool. The Table below only shows those configuration parameters relevant to DICOM communication. See the DR-200/DRU-200 Service Manual for details on general configuration capabilities.

Table 2.4-2
CONFIGURATION PARAMETERS TABLE

Parameter	Configurable (Yes/No)	Default Value
General Parameters		
PDU Size	Yes	16kB
Time-out waiting for acceptance or rejection Response to an Association Open Request. (Application Level timeout)	No	None
General DIMSE level time-out values	No	None
Time-out waiting for response to TCP/IP connect() request. (Low-level timeout)	No	None
Time-out waiting for acceptance of a TCP/IP message over the network. (Low-level timeout)	No	None
Time-out for waiting for data between TCP/IP packets.(Low-level timeout)	No	None
Any changes to default TCP/IP settings, such as configurable stack parameters.	No	None

3. SUPPORT OF CHARACTER SETS

All the DR-200/DRU-200 applications support the following character sets:

ISO-IR 6 (ISO 646)

ISO-IR100 (ISO 8859-1:1987 Latin Alphabet No.1 supplementary set)

ISO-IR 13 (JIS X 0201: Katakana)

ISO-IR 14 (JIS X 0201: Romaji)

ISO-IR 87 (JIS X 0208: Kanji)

ISO-IR159 (JIS X 0212:Supplementary Kanji set)

The DR-200/DRU-200 will set the corresponding character set based on its configuration as listed below:

**Table 2.4-1
CHARACTER SET**

Configuration	Character Set
English mode	ISO_IR 100
Japanese mode	ISO_IR 13 or ISO 2022 IR 13\ISO 2022 IR 87 or ISO 2022 IR 13\ISO 2022 IR 87\ISO 2022 IR 159 or \ISO 2022 IR 87 or \ISO 2022 IR 87\ISO 2022 IR 159

The DR-200/DRU-200 accepts the worklist item of the specific character set which is the sub set of the DR-200/DRU-200 configuration. When the configuration of the DR-200/DRU-200 contains ISO_IR 13(or ISO 2022 IR 13), it considers the ISO-IR 6 as the equivalent for the ISO-IR 14 although there are a few different characters between them.

The DR-200/DRU-200 set the Specific Character Set(0008,0005) from the configuration, does not holds the one from the worklist item.

4. SECURITY

The DR-200/DRU-200 does not support any specific security measures.

It is assumed that the DR-200/DRU-200 is used within a secured environment. It is assumed that a secured environment includes at a minimum:

- a. Firewall or router protections to ensure that only approved external hosts have network access to the DR-200/DRU-200.
- b. Firewall or router protections to ensure that the DR-200/DRU-200 only has network access to approved external hosts and services.
- c. Any communication with external hosts and services outside the locally secured environment use appropriate secure network channels (e.g. such as a Virtual Private Network (VPN)).

Other network security procedures such as automated intrusion detection may be appropriate in some environments. Additional security features may be established by the local security policy and are beyond the scope of this conformance statement.

5. ANNEXES

5.1. IOD CONTENTS

5.1.1. Created SOP Instances

The attributes of each IODs transmitted by the DR-200/DRU-200 storage application are specified in the Table listed below:

Table 5.1-1
ATTRIBUTES FOR EACH IOD

IOD	Specified Table
Digital X-Ray Image IOD - For Presentation	Table 5.1-2
Computed Radiography Image IOD	Table 5.1-3

The following tables use a number of abbreviations. The abbreviations used in the “Presence of Module” column are:

VNAP	Value Not Always Present (attribute sent zero length if no value is present)
ANAP	Attribute Not Always Present
ALWAYS	Always Present
EMPTY	Attribute is sent without a value

The abbreviations used in the “Source” column are:

MWL	the attribute value source Modality Worklist
USER	the attribute value source is from User input
AUTO	the attribute value is generated automatically
MPPS	the attribute value is the same as that use for Modality Performed Procedure Step
CONFIG	the attribute value source is a configurable parameter

NOTE: All dates and times are encoded in the local configured calendar and time. Date, Time and Time zone are configured using the Windows Date and Time configuration.

5.1.1.1. Digital X-Ray Image IOD

**Table 5.1-2
IOD OF CREATED DX SOP INSTANCES**

IE	Module	Reference	Presence of Module
Patient	Patient	Table 5.1-4	ALWAYS
Study	General Study	Table 5.1-5	ALWAYS
	Patient Study	Table 5.1-6	ALWAYS
Series	General Series	Table 5.1-7	ALWAYS
	DX Series	Table 5.1-9	ALWAYS
Equipment	General Equipment	Table 5.1-10	ALWAYS
Image	General Image	Table 5.1-11	ALWAYS
	Image Pixel	Table 5.1-12	ALWAYS
	X-Ray Acquisition Dose	Table 5.1-14	ALWAYS
	X-Ray Generation Module	Table 5.1-15	ALWAYS
	X-Ray Filtration Module	Table 5.1-16	ALWAYS
	DX Anatomy Imaged	Table 5.1-17	ALWAYS
	DX Image	Table 5.1-18	ALWAYS
	DX Detector	Table 5.1-19	ALWYAS
	Acquisition Context	Table 5.1-20	ALWAYS
	SOP Common	Table 5.1-21	ALWAYS

5.1.1.2. Computed Radiography Image IOD

Table 5.1-3
IOD OF CREATED CR SOP INSTANCES

IE	Module	Reference	Presence of Module
Patient	Patient	Table 5.1-4	ALWAYS
Study	General Study	Table 5.1-5	ALWAYS
	Patient Study	Table 5.1-6	ALWAYS
Series	General Series	Table 5.1-7	ALWAYS
	CR Series	Table 5.1-8	ALWAYS
Equipment	General Equipment	Table 5.1-10	ALWAYS
Image	General Image	Table 5.1-11	ALWAYS
	Image Pixel	Table 5.1-12	ALWAYS
	CR Image	Table 5.1-13	ALWAYS
	SOP Common	Table 5.1-21	ALWAYS

5.1.1.3. Modules

5.1.1.3.1. Patient Module

Table 5.1-4

PATIENT MODULE OF CREATED SOP INSTANCES

Attribute Name	Tag	VR	Value	Presence of Value	Source
Patient's Name	(0010,0010)	PN	From Modality Worklist or user input or generated by device	VNAP	MWL/ USER/ AUTO
Patient ID	(0010,0020)	LO	From Modality Worklist or user input or generated by device	VNAP	MWL/ USER/ AUTO
Patient's Birth Date	(0010,0030)	DA	From Modality Worklist or user input	VNAP	MWL/ USER
Patient's Sex	(0010,0040)	CS	From Modality Worklist or user input	VNAP	MWL/ USER
Patient Comments	(0010,4000)	LT	From user input	VNAP	USER

5.1.1.3.2. General Study Module

Table 5.1-5

GENERAL STUDY MODULE OF CREATED SOP INSTANCES

Attribute Name	Tag	VR	Value	Presence of Value	Source
Study Date	(0008,0020)	DA	<yyyymmdd> format date when the study is started	ALWAYS	AUTO
Study Time	(0008,0030)	TM	<hhmmss.fff> format time when the study is started	ALWAYS	AUTO
Accession Number	(0008,0050)	SH	From Modality Worklist or user input	VNAP	MWL/ USER/
Referring Physician's Name	(0008,0090)	PN	From Modality Worklist or user input	VNAP	MWL/ USER
Study Description	(0008,1030)	LO	From Modality Worklist or user input	VNAP	MWL/ USER
Physician(s) of Record	(0008,1048)	PN	From Modality Worklist or user input	VNAP	MWL/ USER
Name of Physician(s) Reading Study	(0008,1060)	PN	From Modality Worklist or user input	VNAP	MWL/ USER
Study Instance UID	(0020,000D)	UI	From Modality Worklist or generated by device	ALWAYS	MWL/ AUTO

Attribute Name	Tag	VR	Value	Presence of Value	Source
Study ID	(0020,0010)	SH	From Modality Worklist (Requested Procedure ID (0040,1001)) or set to "".	VNAP	MWL/AUTO

5.1.1.3.3. Patient Study Module

Table 5.1-6

PATIENT STUDY MODULE OF CREATED SOP INSTANCES

Attribute Name	Tag	VR	Value	Presence of Value	Source
Patient's Age	(0010,1010)	AS	From Modality Worklist or user input or generated by device	VNAP	MWL/USER/AUTO
Patient's Size	(0010,1020)	DS	From Modality Worklist	VNAP	MWL
Patient's Weight	(0010,1030)	DS	From Modality Worklist	VNAP	MWL

5.1.1.3.4. General Series Module

Table 5.1-7

GENERAL SERIES MODULE OF CREATED SOP INSTANCES

Attribute Name	Tag	VR	Value	Presence of Value	Source
Series Date	(0008,0021)	DA	<yyyymmdd> format date when the series is created	ALWAYS	AUTO
Series Time	(0008,0031)	TM	<hhmmss.fff> format time when the series is created	ALWAYS	AUTO
Modality	(0008,0060)	CS	"DX", "CR"	ALWAYS	CONFIG
Series Description	(0008,103E)	LO	From Modality Worklist or user input	VNAP	MWL/USER
Performing Physician's Name	(0008,1050)	PN	From Modality Worklist or user input	VNAP	MWL/USER
Operator's Name	(0008,1070)	PN	From Modality Worklist or user input	VNAP	MWL/USER
Body Part Examined	(0018,0015)	CS	From user input in Protocol	VNAP	USER
Protocol Name	(0018,1030)	LO	Name and Description of the selected Protocol	ALWAYS	USER
Series Instance UID	(0020,000E)	UI	Generated by device	ALWAYS	AUTO
Series Number	(0020,0011)	IS	Generated by device	ALWAYS	AUTO

Attribute Name	Tag	VR	Value	Presence of Value	Source
Laterality	(0020,0060)	CS	“”	EMPTY	AUTO

5.1.1.3.5. CR Series Module

Table 5.1-8

CR SERIES MODULE OF CREATED SOP INSTANCES

Attribute Name	Tag	VR	Value	Presence of Value	Source
Body Part Examined	(0018,0015)	CS	From user input in Protocol	VNAP	USER
View Position	(0018,5101)	CS	From user input in Protocol	EMPTY	AUTO

5.1.1.3.6. DX Series Module

Table 5.1-9

DX SERIES MODULE OF CREATED SOP INSTANCES

Attribute Name	Tag	VR	Value	Presence of Value	Source
Modality	(0008,0060)	CS	“DX” , “CR”	ALWAYS	CONFIG
Presentation Intent Type	(0008,0068)	CS	“FOR PRESENTATION”	ALWAYS	AUTO
Referenced Performed Procedure Step Sequence	(0008,1111)	SQ	Only if MPPS is enabled	ANAP	AUTO
>Referenced SOP Class UID	(0008,1150)	UI	“1.2.840.10008.3.1.2.3.3”	ANAP	AUTO
>Referenced SOP Instance UID	(0008,1155)	UI	From related MPPS Instance	ANAP	AUTO

5.1.1.3.7. General Equipment Module

Table 5.1-10

GENERAL EQUIPMENT MODULE OF CREATED SOP INSTANCES

Attribute Name	Tag	VR	Value	Presence of Value	Source
Manufacturer	(0008,0070)	LO	“Shimadzu Corp.”	ALWAYS	AUTO
Institution Name	(0008,0080)	LO	From Configuration	ALWAYS	CONFIG
Institution Address	(0008,0081)	ST	From Configuration	ALWAYS	CONFIG

Attribute Name	Tag	VR	Value	Presence of Value	Source
Station Name	(0008,1010)	SH	From Configuration	ALWAYS	CONFIG
Institution Department Name	(0008,1040)	LO	From Configuration	ALWAYS	CONFIG
Manufacturer's Model Name	(0008,1090)	LO	"DR-200"	ALWAYS	AUTO
Device Serial Number	(0018,1000)	LO	From Configuration	ALWAYS	CONFIG
Software Versions	(0018,1020)	LO	From Configuration	ALWAYS	CONFIG

5.1.1.3.8. General Image Module

Table 5.1-11

GENERAL IMAGE MODULE OF CREATED SOP INSTANCES

Attribute Name	Tag	VR	Value	Presence of Value	Source
Acquisition Date	(0008,0022)	DA	<yyyymmdd> format date when the image is acquired	ALWAYS	AUTO
Content Date	(0008,0023)	DA	<yyyymmdd> format date when the image is acquired	ALWAYS	AUTO
Acquisition Time	(0008,0032)	TM	<hhmmss> format time when the image is acquired	ALWAYS	AUTO
Content Time	(0008,0033)	TM	<hhmmss> format time when the image is acquired	ALWAYS	AUTO
Source Image Sequence	(0008,2112)	SQ	Generated by device only in case of LONGVIEW Stitched image to indicate its original images	ANAP	AUTO
>Referenced SOP Class UID	(0008,1150)	UI	From referenced image	ANAP	AUTO
>Referenced SOP Instance UID	(0008,1155)	UI	From referenced image	ANAP	AUTO
>Referenced Frame Number	(0008,1160)	IS	If referenced image is a multiframe image	ANAP	AUTO
Acquisition Number	(0020,0012)	IS	Generated by device	ALWAYS	AUTO
Instance Number	(0020,0013)	IS	Generated by device	ALWAYS	AUTO
Patient Orientation	(0020,0020)	CS	Generated by device	ALWAYS	AUTO
Image Comments	(0020,4000)	LT	From user input	VNAP	USER

Attribute Name	Tag	VR	Value	Presence of Value	Source
Burned In Annotation	(0028,0301)	CS	“NO”	ALWAYS	AUTO

5.1.1.3.9. Image Pixel Module

Table 5.1-12

IMAGE PIXEL MODULE OF CREATED SOP INSTANCES

Attribute Name	Tag	VR	Value	Presence of Value	Source
Rows	(0028,0010)	US	Number of rows in the image	ALWAYS	AUTO
Columns	(0028,0011)	US	Number of columns in the image	ALWAYS	AUTO
Pixel Aspect Ratio	(0028,0034)	IS	“”	EMPTY	AUTO
Pixel Data	(7FE0,0010)	OW	The Pixel Data itself	ALWAYS	AUTO

5.1.1.3.10. CR Image Module

Table 5.1-13

CR IMAGE MODULE OF CREATED SOP INSTANCES

Attribute Name	Tag	VR	Value	Presence of Value	Source
KVP	(0018,0060)	DS	From Acquisition parameters	ALWAYS	AUTO
Distance Source to Detector	(0018,1110)	DS	From Acquisition parameters	ALWAYS	AUTO
Exposure Time	(0018,1150)	IS	From Acquisition parameters	ALWAYS	AUTO
X-Ray Tube Current	(0018,1151)	IS	From Acquisition parameters	ALWAYS	AUTO
Image Pixel Spacing	(0018,1164)	DS	Generated by device (on the detector)	ALWAYS	AUTO
Photometric Interpretation	(0028,0004)	CS	“MONOCHROME2”	ALWAYS	AUTO
Pixel Spacing	(0028,0030)	DS	Generated by device (on Xcm above from table-top, X is config)	ALWAYS	AUTO

5.1.1.3.11. X-Ray Acquisition Dose Module

Table 5.1-14

X-RAY ACQUISITION DOSE MODULE OF CREATED SOP INSTANCES

Attribute Name	Tag	VR	Value	Presence of Value	Source
KVP	(0018,0060)	DS	From Acquisition parameters	ALWAYS	AUTO
Distance Source to Detector	(0018,1110)	DS	From Acquisition parameters	ALWAYS	AUTO
Distance Source to Patient	(0018,1111)	DS	Assumed the patient is on X cm above from table-top	ALWAYS	AUTO
Exposure Time	(0018,1150)	IS	From Acquisition parameters	ALWAYS	AUTO
X-Ray Tube Current	(0018,1151)	IS	From Acquisition parameters	ALWAYS	AUTO
Image and Fluoroscopy Area Dose Product	(0018,115E)	DS	Generated by device	VNAP	AUTO
Exposure Time in uS	(0018,8150)	DS	From Acquisition parameters	ALWAYS	AUTO
X-Ray Tube Current in uA	(0018,8151)	DS	From Acquisition parameters	ALWAYS	AUTO

5.1.1.3.12. X-Ray Generation Module

Table 5.1-15

X-RAY GENERATION MODULE OF CREATED SOP INSTANCES

Attribute Name	Tag	VR	Value	Presence of Value	Source
KVP	(0018,0060)	DS	From Acquisition parameters	ALWAYS	AUTO
Generator ID	(0018,1005)	LO	Generated by device	ALWAYS	AUTO
Exposure Time	(0018,1150)	IS	From Acquisition parameters	ALWAYS	AUTO
X-Ray Tube Current	(0018,1151)	IS	From Acquisition parameters	ALWAYS	AUTO
Exposure	(0018,1152)	IS	From Acquisition parameters	ALWAYS	AUTO
Exposure in μAs	(0018,1153)	IS	From Acquisition parameters	ALWAYS	AUTO
Focal Spot	(0018,1190)	DS	Generated by device	ALWAYS	AUTO
Anode Target Material	(0018,1191)	CS	Generated by device	ALWAYS	AUTO

Attribute Name	Tag	VR	Value	Presence of Value	Source
Exposure Control Mode	(0018,7060)	CS	From Acquisition parameters	ALWAYS	AUTO
Exposure Control Mode Description	(0018,7062)	LT	From Acquisition parameters	ALWAYS	AUTO
Exposure Time in uS	(0018,8150)	DS	From Acquisition parameters	ALWAYS	AUTO
X-Ray Tube Current in uA	(0018,8151)	DS	From Acquisition parameters	ALWAYS	AUTO

5.1.1.3.13. X-Ray Filtration Module

Table 5.1-16

X-RAY FILTRATION MODULE OF CREATED SOP INSTANCES

Attribute Name	Tag	VR	Value	Presence of Value	Source
Filter Type	(0018,1160)	SH	Generated by device	ALWAYS	AUTO
Filter Material	(0018,7050)	CS	Generated by device	ALWAYS	AUTO
Filter Thickness Minimum	(0018,7052)	DS	Generated by device	ALWAYS	AUTO
Filter Thickness Maximum	(0018,7054)	DS	Generated by device	ALWAYS	AUTO

5.1.1.3.14. DX Anatomy Imaged Module

Table 5.1-17

DX ANATOMY IMAGED MODULE OF CREATED SOP INSTANCES

Attribute Name	Tag	VR	Value	Presence of Value	Source
Anatomic Region Sequence	(0008,2218)	SQ	From user input in Protocol	ALWAYS	AUTO
Image Laterality	(0020,0062)	CS	From user input in Protocol	ALWAYS	AUTO

5.1.1.3.15. DX Image Module

Table 5.1-18

DX IMAGE MODULE OF CREATED SOP INSTANCES

Attribute Name	Tag	VR	Value	Presence of Value	Source
Image Type	(0008,0008)	CS	Generated by device	ALWAYS	AUTO

Attribute Name	Tag	VR	Value	Presence of Value	Source
Patient Orientation	(0020,0020)	CS	Generated by device	ALWAYS	AUTO
Samples per Pixel	(0028,0002)	US	“1”	ALWAYS	AUTO
Photometric Interpretation	(0028,0004)	CS	“MONOCHROME2”	ALWAYS	AUTO
Bits Allocated	(0028,0100)	US	“16”	ALWAYS	AUTO
Bits Stored	(0028,0101)	US	“16”, “14”, or “12” from configuration	ALWAYS	CONFIG
High Bits	(0028,0102)	US	“15”	ALWAYS	CONFIG
Pixel Representation	(0028,0103)	US	“0”	ALWAYS	AUTO
Burned In Annotation	(0028,0301)	CS	“NO”	ALWAYS	AUTO
Pixel Intensity Relationship	(0028,1040)	CS	“LOG”	ALWAYS	AUTO
Pixel Intensity Relationship Sign	(0028,1041)	SS	“1”	ALWAYS	AUTO
Window Center	(0028,1050)	DS	From Acquisition parameters	ALWAYS	AUTO
Window Width	(0028,1051)	DS	From Acquisition parameters	ALWAYS	AUTO
Rescale Intercept	(0028,1052)	DS	“0”	ALWAYS	AUTO
Rescale Slope	(0028,1053)	DS	“1”	ALWAYS	AUTO
Rescale Type	(0028,1054)	LO	“US”	ALWAYS	AUTO
Lossy Image Compression	(0028,2110)	CS	“00”	ALWAYS	AUTO

5.1.1.3.16. DX Detector Module

Table 5.1-19

DX DETECTOR MODULE OF CREATED SOP INSTANCES

Attribute Name	Tag	VR	Value	Presence of Value	Source
Field of View Shape	(0018,1147)	CS	“RECTANGLE”	ALWAYS	AUTO
Field of View Dimension(s)	(0018,1149)	IS	Generated by device	ALWAYS	AUTO
Image Pixel Spacing	(0018,1164)	DS	Generated by device (on the detector)	ALWAYS	AUTO

Attribute Name	Tag	VR	Value	Presence of Value	Source
Detector Type	(0018,7004)	CS	“SCINTILLATOR”	ALWAYS	AUTO
Pixel Spacing	(0028,0030)	DS	Generated by device (on Xcm above from table-top, X is config)	ALWAYS	AUTO

5.1.1.3.17. Acquisition Context Module

Table 5.1-20

ACQUISITION CONTEXT MODULE OF CREATED SOP INSTANCES

Attribute Name	Tag	VR	Value	Presence of Value	Source
Acquisition Context Sequence	(0040,0555)	SQ	“”	EMPTY	AUTO

5.1.1.3.18. SOP Common Module

Table 5.1-21

SOP COMMON MODULE OF CREATED SOP INSTANCES

Attribute Name	Tag	VR	Value	Presence of Value	Source
Specific Character Set	(0008,0005)	CS	In Japanese Mode: “ISO_IR 13” or “ISO 2022 IR 13\ISO 2022 IR 87” or “ISO 2022 IR 13\ISO 2022 IR 87\ISO 2022 IR 159” or “\ISO 2022 IR 87” or “\ISO 2022 IR 87\ISO 2022 IR 159” In English Mode: “ISO_IR 100”	ALWAYS	AUTO
Instance Creation Date	(0008,0012)	DA	<yyyymmdd> formats date when the image data is created	ALWAYS	AUTO
Instance Creation Time	(0008,0013)	TM	<hhmmss> formats time when the image data is created	ALWAYS	AUTO
SOP Class UID	(0008,0016)	UI	“1.2.840.10008.5.1.4.1.1.1” “1.2.840.10008.5.1.4.1.1.1”	ALWAYS	AUTO
SOP Instance UID	(0008,0018)	UI	Generated by device	ALWAYS	AUTO

5.1.2. Used Fields in received IOD by application

The DR-200/DRU-200 storage application does not receive SOP Instances. The usage of attributes received via Modality Worklist is described in section 2.2.2.3.2.3.

5.1.3. Attribute mapping

The relationship between attributes received via Modality Worklist, stored in acquired images and communicated via MPPS are summarized in the Table below.

Table 5.1-22

ATTRIBUTE MAPPING BETWEEN MODALITY WORKLIST, IMAGE AND MPPS

Modality Worklist	Image IOD	MPPS IOD
Specific Character Set	Specific Character Set (overwritten by configuration)	Specific Character Set (overwritten by configuration)
Modality	Modality (overwritten by configuration)	Modality (overwritten by configuration)
>Scheduled Station AE Title		Performed Station AE Title
>Scheduled Performing Physician's Name	Performing Physician's Name	>Performing Physician's Name
>Scheduled Procedure Step Description		>Scheduled Procedure Step Description
		Performed Procedure Step Description
>Scheduled Protocol Code Sequence		>Scheduled Protocol Code Sequence
		Performed Protocol Code Sequence
>Scheduled Procedure Step ID		>Scheduled Procedure Step ID
		Performed Procedure Step ID
>Scheduled Station Name	Station Name	Performed Station Name
>Scheduled Procedure Step Location	Institution Department Name	Performed Location
Referenced Study Sequence		>Referenced Study Sequence
Study Instance UID	Study Instance UID	>Study Instance UID
Requested Procedure Description	Study Description	>Requested Procedure Description
Requested Procedure Code Sequence		Procedure Code Sequence
Requested Procedure ID		>Requested Procedure ID
Accession Number	Accession Number	Accession Number

Modality Worklist	Image IOD	MPPS IOD
Referring Physician's Name	Referring Physician's Name	
Patient's Name	Patient's Name	Patient's Name
Patient ID	Patient ID	Patient ID
Patient's Birth Date	Patient's Birth Date	Patient's Birth Date
Patient's Sex	Patient's Sex	Patient's Sex
Patient's Weight	Patient's Weight	
	Series Description	>Series Description
	Operator's Name	>Operator's Name
	Protocol Name	Protocol Name
	Series Instance UID	Series Instance UID
	Study ID	Study ID
Pregnancy Status	Pregnancy Status	

5.1.4. Coerced/Modified Fields

The DR-200/DRU-200 does not coerce/modify any attribute values received in the response to a Modality Worklist Query.

5.2. DATA DICTIONARY OF PRIVATE ATTRIBUTES

The Private Attributes added to created SOP Instances are listed in the Table below. The DR-200/DRU-200 reserves block of private attributes in groups 6921

Table 5.2-1
DATA DICTIONARY OF PRIVATE ATTRIBUTES

Tag	Attribute Name
(6921,0010)	Private Creator (Value is "SHRAD2110.0")
(6921,0011)	Private Creator(Value is "SHRAD2111.0")
(6921,0012)	Private Creator(Value is "SHRAD2112.0")
(6921,0013)	Private Creator(Value is "SHRAD2113.0")
(6921,0014)	Private Creator(Value is "SHRAD2114.0")
(6921,0015)	Private Creator(Value is "SHRAD2115.0")
(6921,0016)	Private Creator(Value is "SHRAD2116.0")
(6921,0017)	Private Creator(Value is "SHRAD2117.0")
(6921,0018)	Private Creator(Value is "SHRAD2118.0")

Tag	Attribute Name
(6921,0019)	Private Creator(Value is “SHRAD2119.0”)
(6921,0020)	Private Creator(Value is “SHRAD2120.0”)
(6921,0021)	Private Creator(Value is “SHRAD2121.0”)
(6921,0022)	Private Creator(Value is “SHRAD2122.0”)
(6921,10XX)	Study Info
(6921,11XX)	Patient Info
(6921,12XX)	Acq Info
(6921,13XX)	Acq Protocol Info
(6921,14XX)	X-Ray Info
(6921,15XX)	Image Proc Info
(6921,16XX)	Machine Info
(6921,17XX)	Series Info
(6921,18XX)	Geometry Info
(6921,20XX)	DICOM Info
(6921,21XX)	DICOM Info

5.3. Coded Terminology and Templates

The Workflow AE is capable of supporting arbitrary coding scheme for Procedure and Protocol Codes. The contents of Requested Procedure Code Sequence (0032,1064) and Scheduled Protocol Code Sequence (0040,0008) supplied in Worklist items will be mapped to MPPS attributes as described in Table 6-5.

5.4. Grayscale Image Consistency

The monitors attached to the DR-200/DRU-200 support Grayscale Standard Display Function.

5.5. Standard Extended/Specialized/Private SOP Classes

No Specialized or Private SOP Classes are supported.

5.6. Private Transfer Syntaxes

No Private Transfer Syntaxes are supported.

5.7. Handling of Study Instance UID of Worklist Item

The DR-200/DRU-200 uses the Study Instance UID(0020,000D) as the identifier of study in the internal storage of studies. When multiple worklist items have the same Study Instance UID, the DR-200/DRU-200 can handle the last one. The DR-200/DRU-200 ignores the other items.

文書承認履歴

文書の承認履歴を以下に記述します。

文書番号: S517-E101A

文書名称: DICOM Conformance Statement for DR-200/DRU-200

区分	ID	氏名	日時
作成	000738	新谷 鋭一	2014/07/15 19:18:41
検討1	001039	高柳 剛	2014/07/15 19:25:35
承認1	007650	平田 五郎	2014/07/15 19:28:11

制定・改訂理由

制定・改訂理由：
A改定作成。変更内容は改定履歴参照のこと。

制定・改訂理由詳細：